

Summary

Production Name	CSGlcA-T Rabbit Polyclonal Antibody
Description	Rabbit Polyclonal Antibody
Host	Rabbit
Application	WB,IHC-P,IF-P,IF-F,ICC/IF,ELISA
Reactivity	Human,Rat,Mouse

Performance

Conjugation	Unconjugated
Modification	Unmodified
Isotype	IgG
Clonality	Polyclonal
Form	Liquid
Storage	Store at 4°C short term. Aliquot and store at -20°C long term. Avoid freeze/thaw cycles.
Buffer	Liquid in PBS containing 50% glycerol, 0.5% BSA and 0.02% New type preservative N.
Purification	Affinity purification

Immunogen

Gene Name	CHPF2 CHPF2; CHSY3; CSGLCAT; KIAA1402; Chondroitin sulfate glucuronyltransferase;
Alternative Names	CSGlcA-T; Chondroitin glucuronyltransferase; Chondroitin polymerizing factor 2; ChPF-2; Chondroitin synthase 3; ChSy-3; N-acetylgalactosaminyI-proteoglycan 3-beta-g
Gene ID	54480.0
SwissProt ID	Q9P2E5.The antiserum was produced against synthesized peptide derived from human CSGLCAT. AA range:31-80

Application

Dilution Ratio	WB 1:500-1:2000, IHC-P 1:100-1:300, ELISA 1:40000, IF-P/IF-F/ICC/IF 1:50-200
Molecular Weight	86kDa

Product Name: CSGlcA-T Rabbit Polyclonal Antibody
Catalog #: APRab09450



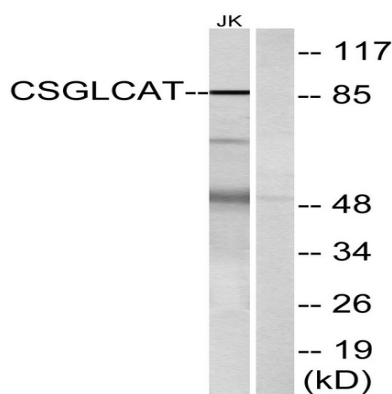
Background

CHPF2 (Chondroitin Polymerizing Factor 2) is a Protein Coding gene. Among its related pathways are Defective B3GAT3 causes JDSSDHD and Metabolism. GO annotations related to this gene include transferase activity, transferring glycosyl groups and N-acetylgalactosaminyl-proteoglycan 3-beta-glucuronosyltransferase activity. An important paralog of this gene is B4GALNT4.

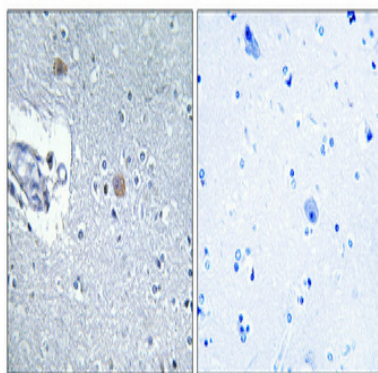
Research Area

Chondroitin sulfate biosynthesis;

Image Data



Western blot analysis of lysates from Jurkat cells, using CSGLCAT Antibody. The lane on the right is blocked with the synthesized peptide.



Immunohistochemical analysis of paraffin-embedded Human brain. Antibody was diluted at 1:100 (4°, overnight). High-pressure and temperature Tris-EDTA, pH 8.0 was used for antigen retrieval. Negative control (right) obtained from antibody was pre-absorbed by immunogen peptide.

Note

For research use only.

Product Name: CSGlcA-T Rabbit Polyclonal Antibody
Catalog #: APRab09450

