

Summary

Production Name	CRMP-3 Rabbit Polyclonal Antibody
Description	Rabbit Polyclonal Antibody
Host	Rabbit
Application	WB,ELISA
Reactivity	Human,Mouse,Rat

Performance

Conjugation	Unconjugated
Modification	Unmodified
Isotype	IgG
Clonality	Polyclonal
Form	Liquid
Storage	Store at 4°C short term. Aliquot and store at -20°C long term. Avoid freeze/thaw cycles.
Buffer	Liquid in PBS containing 50% glycerol, 0.5% BSA and 0.02% New type preservative N.
Purification	Affinity purification

Immunogen

Gene Name	DPYSL4
Alternative Names	DPYSL4; CRMP3; ULIP4; Dihydropyrimidinase-related protein 4; DRP-4; Collapsin response mediator protein 3; CRMP-3; UNC33-like phosphoprotein 4; ULIP-4
Gene ID	10570.0
SwissProt ID	O14531.The antiserum was produced against synthesized peptide derived from human DPYSL4. AA range:91-140

Application

Dilution Ratio	WB 1:500-1:2000, ELISA 1:10000.Not yet tested in other applications.
Molecular Weight	62kDa

Product Name: CRMP-3 Rabbit Polyclonal Antibody
Catalog #: AP Rab09415

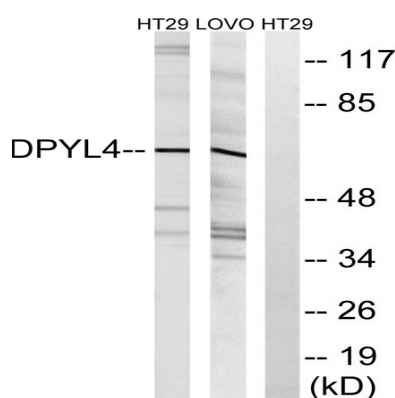


Background

disease:Antibodies against post-translationally modified DPYSL4, also called anti-CV2 autoantibodies, are present in sera from patients with paraneoplastic neurological diseases (PND). PND are disorders of the nervous system associated with various systemic cancers which are not a direct result of the tumor mass or metastasis, but attributed to remote effects of the cancer.,function:Necessary for signaling by class 3 semaphorins and subsequent remodeling of the cytoskeleton. Plays a role in axon guidance, neuronal growth cone collapse and cell migration.,PTM:Phosphorylated upon DNA damage, probably by ATM or ATR.,similarity:Belongs to the DHOase family. Hydantoinase/dihydropyrimidinase subfamily.,subunit:Homotetramer, and heterotetramer with CRMP1, DPYSL2, DPYSL3 or DPYSL5. Interacts with PLEXA1.,disease:Antibodies against post-translationally modified DPYSL4, also called anti-CV2 autoantibodies, are present in sera from patients with paraneoplastic neurological diseases (PND). PND are disorders of the nervous system associated with various systemic cancers which are not a direct result of the tumor mass or metastasis, but attributed to remote effects of the cancer.,function:Necessary for signaling by class 3 semaphorins and subsequent remodeling of the cytoskeleton. Plays a role in axon guidance, neuronal growth cone collapse and cell migration.,PTM:Phosphorylated upon DNA damage, probably by ATM or ATR.,similarity:Belongs to the DHOase family. Hydantoinase/dihydropyrimidinase subfamily.,subunit:Homotetramer, and heterotetramer with CRMP1, DPYSL2, DPYSL3 or DPYSL5. Interacts with PLEXA1.,

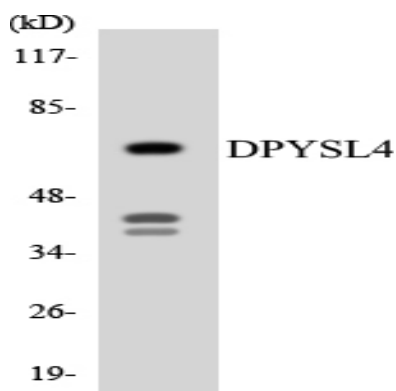
Research Area

Image Data

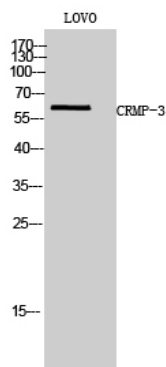


Western blot analysis of lysates from LOVO and HT-29 cells, using DPYSL4 Antibody. The lane on the right is blocked with the synthesized peptide.

Product Name: CRMP-3 Rabbit Polyclonal Antibody
Catalog #: APRab09415



Western blot analysis of the lysates from RAW264.7 cells using DPYSL4 antibody.



Western Blot analysis of LOVO cells using CRMP-3 Polyclonal Antibody

Note

For research use only.