

Product Name: CPXM2 Rabbit Polyclonal Antibody
Catalog #: APRab09338



Summary

Production Name	CPXM2 Rabbit Polyclonal Antibody
Description	Rabbit Polyclonal Antibody
Host	Rabbit
Application	IHC-P,IF-P,IF-F,ICC/IF,ELISA
Reactivity	Human,Rat,Mouse

Performance

Conjugation	Unconjugated
Modification	Unmodified
Isotype	IgG
Clonality	Polyclonal
Form	Liquid
Storage	Store at 4°C short term. Aliquot and store at -20°C long term. Avoid freeze/thaw cycles.
Buffer	Liquid in PBS containing 50% glycerol, 0.5% BSA and 0.02% New type preservative N.
Purification	Affinity purification

Immunogen

Gene Name	CPXM2
Alternative Names	CPXM2; Inactive carboxypeptidase-like protein X2
Gene ID	119587.0
SwissProt ID	Q8N436. The antiserum was produced against synthesized peptide derived from human CPXM2. AA range:450-500

Application

Dilution Ratio	IHC-P 1:100-1:300, ELISA 1:20000, IF-P/IF-F/ICC/IF 1:50-200
Molecular Weight	

Background

caution:As it has lost active sites residues and zinc-binding sites it is unlikely to be catalytically active.,function:May be

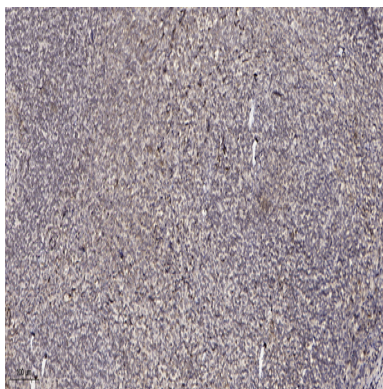
Product Name: CPXM2 Rabbit Polyclonal Antibody
Catalog #: APRab09338



involved in cell-cell interactions.,similarity:Belongs to the peptidase M14 family.,similarity:Contains 1 F5/8 type C domain.,caution:As it has lost active sites residues and zinc-binding sites it is unlikely to be catalytically active.,function:May be involved in cell-cell interactions.,similarity:Belongs to the peptidase M14 family.,similarity:Contains 1 F5/8 type C domain.,

Research Area

Image Data



Immunohistochemical analysis of paraffin-embedded human tonsil. 1, Antibody was diluted at 1:200 (4° overnight) . 2, Tris-EDTA,pH9.0 was used for antigen retrieval. 3,Secondary antibody was diluted at 1:200 (room temperature, 30min) .

Note

For research use only.