

**Product Name: Contactin 6 Rabbit Polyclonal Antibody**  
**Catalog #: APRab09244**



## Summary

<b>Production Name</b>	Contactin 6 Rabbit Polyclonal Antibody
<b>Description</b>	Rabbit Polyclonal Antibody
<b>Host</b>	Rabbit
<b>Application</b>	WB,ELISA
<b>Reactivity</b>	Human,Mouse

## Performance

<b>Conjugation</b>	Unconjugated
<b>Modification</b>	Unmodified
<b>Isotype</b>	IgG
<b>Clonality</b>	Polyclonal
<b>Form</b>	Liquid
<b>Storage</b>	Store at 4°C short term. Aliquot and store at -20°C long term. Avoid freeze/thaw cycles.
<b>Buffer</b>	Liquid in PBS containing 50% glycerol, 0.5% BSA and 0.02% New type preservative N.
<b>Purification</b>	Affinity purification

## Immunogen

<b>Gene Name</b>	CNTN6
<b>Alternative Names</b>	CNTN6; Contactin-6; Neural recognition molecule NB-3; hNB-3
<b>Gene ID</b>	27255.0
<b>SwissProt ID</b>	Q9UQ52.The antiserum was produced against synthesized peptide derived from human CNTN6. AA range:331-380

## Application

<b>Dilution Ratio</b>	WB 1:500-1:2000, ELISA 1:40000.Not yet tested in other applications.
<b>Molecular Weight</b>	

## Background

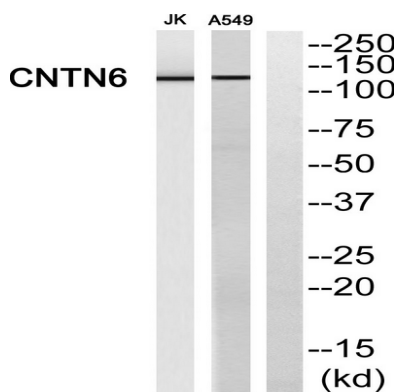
**Product Name: Contactin 6 Rabbit Polyclonal Antibody**  
**Catalog #: AP Rab09244**



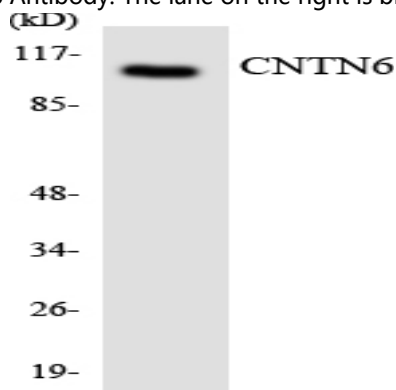
The protein encoded by this gene is a member of the immunoglobulin superfamily. It is a glycosylphosphatidylinositol (GPI)-anchored neuronal membrane protein that functions as a cell adhesion molecule. It may play a role in the formation of axon connections in the developing nervous system. Alternative splicing results in multiple transcript variants. [provided by RefSeq, Jan 2014],function:Contactins mediate cell surface interactions during nervous system development. Participates in oligodendrocytes generation by acting as a ligand of NOTCH1. Its association with NOTCH1 promotes NOTCH1 activation through the released notch intracellular domain (NICD) and subsequent translocation to the nucleus. Involved in motor coordination.,similarity:Belongs to the immunoglobulin superfamily. Contactin family.,similarity:Contains 4 fibronectin type-III domains.,similarity:Contains 6 Ig-like C2-type (immunoglobulin-like) domains.,tissue specificity:Expressed in nervous system. Highly expressed in cerebellum. Expressed at intermediate level in thalamus, subthalamic nucleus. Weakly expressed in corpus callosum, caudate nucleus and spinal cord.,

## Research Area

## Image Data



Western blot analysis of CNTN6 Antibody. The lane on the right is blocked with the CNTN6 peptide.



Western blot analysis of the lysates from HeLa cells using CNTN6 antibody.

**Product Name: Contactin 6 Rabbit Polyclonal Antibody**  
**Catalog #: APRab09244**



---

**Note**

For research use only.