

**Product Name: Connexin 37 Rabbit Polyclonal Antibody**  
**Catalog #: AP Rab09230**



## Summary

<b>Production Name</b>	Connexin 37 Rabbit Polyclonal Antibody
<b>Description</b>	Rabbit Polyclonal Antibody
<b>Host</b>	Rabbit
<b>Application</b>	WB,ELISA
<b>Reactivity</b>	Human,Mouse,Rat

## Performance

<b>Conjugation</b>	Unconjugated
<b>Modification</b>	Unmodified
<b>Isotype</b>	IgG
<b>Clonality</b>	Polyclonal
<b>Form</b>	Liquid
<b>Storage</b>	Store at 4°C short term. Aliquot and store at -20°C long term. Avoid freeze/thaw cycles.
<b>Buffer</b>	Liquid in PBS containing 50% glycerol, 0.5% BSA and 0.02% New type preservative N.
<b>Purification</b>	Affinity purification

## Immunogen

<b>Gene Name</b>	GJA4
<b>Alternative Names</b>	GJA4; Gap junction alpha-4 protein; Connexin-37; Cx37
<b>Gene ID</b>	2701.0
<b>SwissProt ID</b>	P35212.The antiserum was produced against synthesized peptide derived from human GJA4. AA range:81-130

## Application

<b>Dilution Ratio</b>	WB 1:500-1:2000, ELISA 1:40000.Not yet tested in other applications.
<b>Molecular Weight</b>	37kDa

## Background

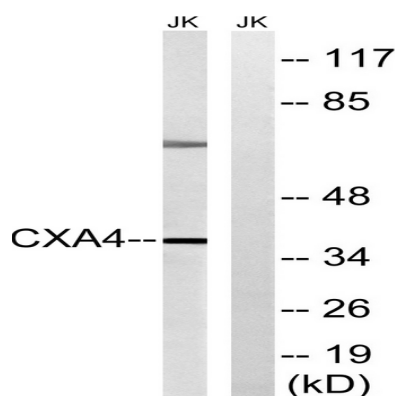
**Product Name: Connexin 37 Rabbit Polyclonal Antibody**  
**Catalog #: APRab09230**



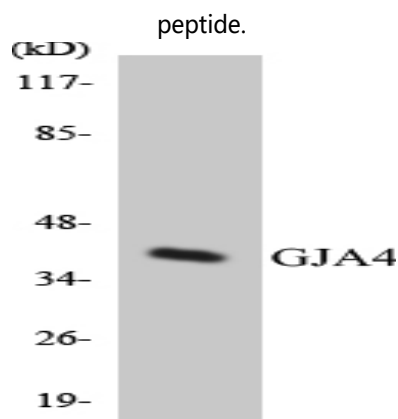
This gene encodes a member of the connexin gene family. The encoded protein is a component of gap junctions, which are composed of arrays of intercellular channels that provide a route for the diffusion of low molecular weight materials from cell to cell. Mutations in this gene have been associated with atherosclerosis and a higher risk of myocardial infarction. [provided by RefSeq, Jul 2008],function:One gap junction consists of a cluster of closely packed pairs of transmembrane channels, the connexons, through which materials of low MW diffuse from one cell to a neighboring cell.,similarity:Belongs to the connexin family.,similarity:Belongs to the connexin family. Alpha-type (group II) subfamily.,subunit:A connexon is composed of a hexamer of connexins.,tissue specificity:Expressed in multiple organs and tissues, including heart, uterus, ovary, and blood vessel endothelium.,

## Research Area

## Image Data



Western blot analysis of lysates from Jurkat cells, using GJA4 Antibody. The lane on the right is blocked with the synthesized peptide.



Western blot analysis of the lysates from 293 cells using GJA4 antibody.

## Note

For research use only.

**Product Name: Connexin 37 Rabbit Polyclonal Antibody**  
**Catalog #: APRab09230**

---

