

Product Name: CNT2 Rabbit Polyclonal Antibody
Catalog #: APRab09136



Summary

Production Name	CNT2 Rabbit Polyclonal Antibody
Description	Rabbit Polyclonal Antibody
Host	Rabbit
Application	WB,IHC-P,IF-P,IF-F,ICC/IF,ELISA
Reactivity	Human,Mouse,Rat

Performance

Conjugation	Unconjugated
Modification	Unmodified
Isotype	IgG
Clonality	Polyclonal
Form	Liquid
Storage	Store at 4°C short term. Aliquot and store at -20°C long term. Avoid freeze/thaw cycles.
Buffer	Liquid in PBS containing 50% glycerol, 0.5% BSA and 0.02% New type preservative N.
Purification	Affinity purification

Immunogen

Gene Name	SLC28A2
Alternative Names	SLC28A2; CNT2; Sodium/nucleoside cotransporter 2; Concentrative nucleoside transporter 2; CNT 2; hCNT2; Na(+)/nucleoside cotransporter 2; Sodium-coupled nucleoside transporter 2; Sodium/purine nucleoside co-transporter; SPNT; Solute carrier
Gene ID	9153.0
SwissProt ID	O43868.The antiserum was produced against synthesized peptide derived from human SLC28A2. AA range:371-420

Application

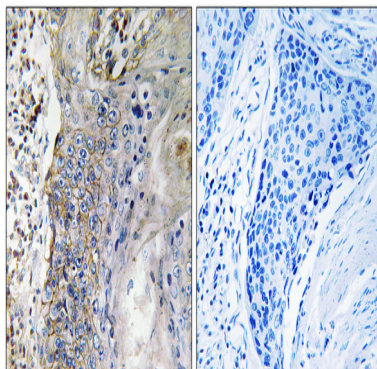
Dilution Ratio	WB 1:500-1:2000, IHC-P 1:100-1:300, ELISA 1:10000, IF-P/IF-F/ICC/IF 1:50-200
Molecular Weight	65kDa

Background

enzyme regulation:Inhibited by formycin B.,function:Sodium-dependent and purine-selective transporter. Exhibits the transport characteristics of the nucleoside transport system cif or N1 subtype (N1/cif) (selective for purine nucleosides and uridine). Plays a critical role in specific uptake and salvage of purine nucleosides in kidney and other tissues.,similarity:Belongs to the concentrative nucleoside transporter (CNT) (TC 2.A.41) family.,tissue specificity:Expressed in heart and skeletal muscle followed by liver, kidney, intestine, pancreas, placenta and brain. Weak expression in lung.,enzyme regulation:Inhibited by formycin B.,function:Sodium-dependent and purine-selective transporter. Exhibits the transport characteristics of the nucleoside transport system cif or N1 subtype (N1/cif) (selective for purine nucleosides and uridine). Plays a critical role in specific uptake and salvage of purine nucleosides in kidney and other tissues.,similarity:Belongs to the concentrative nucleoside transporter (CNT) (TC 2.A.41) family.,tissue specificity:Expressed in heart and skeletal muscle followed by liver, kidney, intestine, pancreas, placenta and brain. Weak expression in lung.,

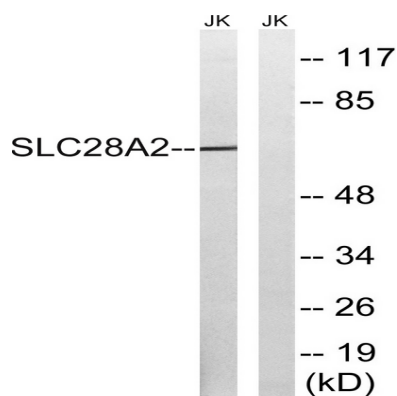
Research Area

Image Data

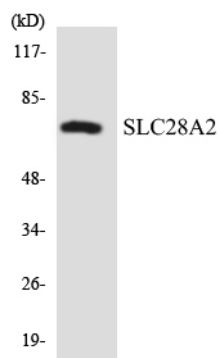


Immunohistochemistry analysis of paraffin-embedded human lung carcinoma tissue, using SLC28A2 Antibody. The picture on the right is blocked with the synthesized peptide.

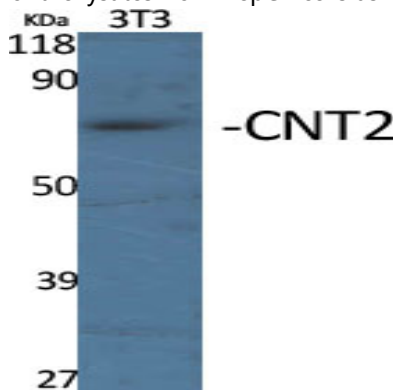
Product Name: CNT2 Rabbit Polyclonal Antibody
Catalog #: APRab09136



Western blot analysis of lysates from Jurkat cells, using SLC28A2 Antibody. The lane on the right is blocked with the synthesized peptide.

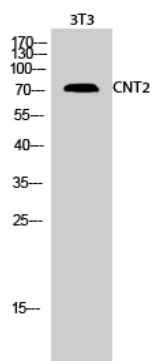


Western blot analysis of the lysates from HepG2 cells using SLC28A2 antibody.



Western Blot analysis of various cells using CNT2 Polyclonal Antibody

Product Name: CNT2 Rabbit Polyclonal Antibody
Catalog #: APRab09136



Western Blot analysis of 3T3 cells using CNT2 Polyclonal Antibody

Note

For research use only.