

Product Name: CMTM6 Rabbit Polyclonal Antibody
Catalog #: APRab09089



Summary

Production Name	CMTM6 Rabbit Polyclonal Antibody
Description	Rabbit Polyclonal Antibody
Host	Rabbit
Application	WB,IHC-P,IF-P,IF-F,ICC/IF,ELISA
Reactivity	Human,Rat,Mouse

Performance

Conjugation	Unconjugated
Modification	Unmodified
Isotype	IgG
Clonality	Polyclonal
Form	Liquid
Storage	Store at 4°C short term. Aliquot and store at -20°C long term. Avoid freeze/thaw cycles.
Buffer	Liquid in PBS containing 50% glycerol, 0.5% BSA and 0.02% New type preservative N.
Purification	Affinity purification

Immunogen

Gene Name	CMTM6
Alternative Names	CMTM6; CKLFSF6; CKLF-like MARVEL transmembrane domain-containing protein 6; Chemokine-like factor superfamily member 6
Gene ID	54918.0
SwissProt ID	Q9NX76.The antiserum was produced against synthesized peptide derived from the C-terminal region of human CMTM6. AA range:131-180

Application

Dilution Ratio	WB 1:500-1:2000, IHC-P 1:100-1:300, ELISA 1:20000, IF-P/IF-F/ICC/IF 1:50-200
Molecular Weight	20kDa

Product Name: CMTM6 Rabbit Polyclonal Antibody
Catalog #: AP Rab09089

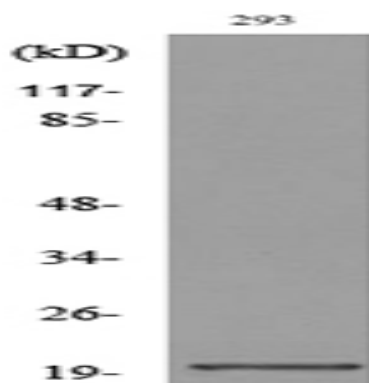


Background

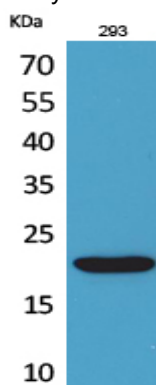
This gene belongs to the chemokine-like factor gene superfamily, a novel family that is similar to the chemokine and transmembrane 4 superfamilies. This gene is one of several chemokine-like factor genes located in a cluster on chromosome 3. This gene is widely expressed in many tissues, but the exact function of the encoded protein is unknown. [provided by RefSeq, Jul 2008],similarity:Belongs to the chemokine-like factor family.,similarity:Contains 1 MARVEL domain.,tissue specificity:Expressed in the leukocytes, placenta and testis.,

Research Area

Image Data

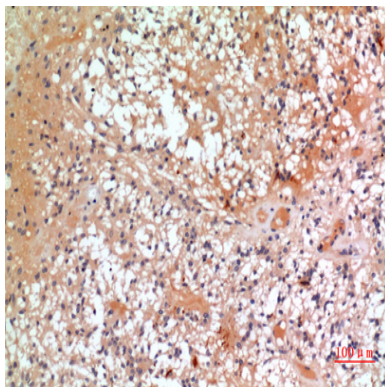


Western blot analysis of lysate from 293 cells, using CMTM6 Antibody.

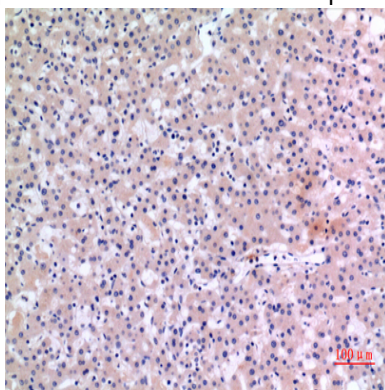


Western Blot analysis of 293 cells using CMTM6 Polyclonal Antibody.. Secondary antibody was diluted at 1:20000

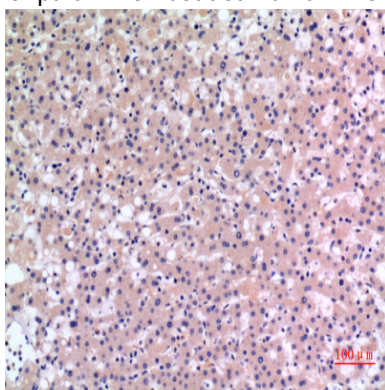
Product Name: CMTM6 Rabbit Polyclonal Antibody
Catalog #: APRab09089



Immunohistochemical analysis of paraffin-embedded human-oophoroma, antibody was diluted at 1:100



Immunohistochemical analysis of paraffin-embedded human-liver, antibody was diluted at 1:100



Immunohistochemical analysis of paraffin-embedded human-liver, antibody was diluted at 1:100

Note

For research use only.