

Product Name: CMTM3 Rabbit Polyclonal Antibody
Catalog #: APRab09086



Summary

Production Name	CMTM3 Rabbit Polyclonal Antibody
Description	Rabbit Polyclonal Antibody
Host	Rabbit
Application	WB,ELISA
Reactivity	Human,Monkey

Performance

Conjugation	Unconjugated
Modification	Unmodified
Isotype	IgG
Clonality	Polyclonal
Form	Liquid
Storage	Store at 4°C short term. Aliquot and store at -20°C long term. Avoid freeze/thaw cycles.
Buffer	Liquid in PBS containing 50% glycerol, 0.5% BSA and 0.02% New type preservative N.
Purification	Affinity purification

Immunogen

Gene Name	CMTM3
Alternative Names	CMTM3; CKLFSF3; CKLF-like MARVEL transmembrane domain-containing protein 3; Chemokine-like factor superfamily member 3
Gene ID	123920.0
SwissProt ID	Q96MX0.The antiserum was produced against synthesized peptide derived from human CKLF3. AA range:1-50

Application

Dilution Ratio	WB 1:500-1:2000, ELISA 1:40000.Not yet tested in other applications.
Molecular Weight	22kDa

Product Name: CMTM3 Rabbit Polyclonal Antibody
Catalog #: AP Rab09086

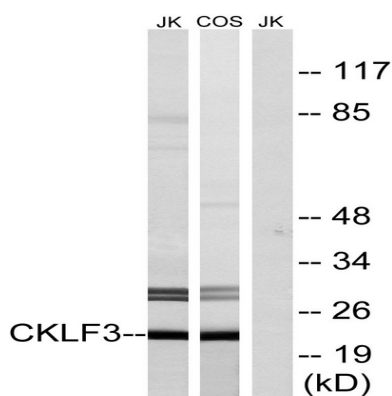


Background

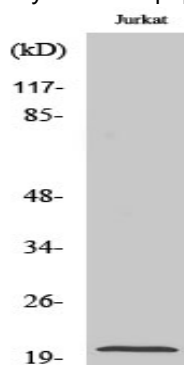
This gene belongs to the chemokine-like factor gene superfamily, a novel family that is similar to the chemokine and the transmembrane 4 superfamilies of signaling molecules. This gene is one of several chemokine-like factor genes located in a cluster on chromosome 16. Alternatively spliced transcript variants containing different 5' UTRs, but encoding the same protein, have been identified. [provided by RefSeq, Jul 2008], similarity: Belongs to the chemokine-like factor family., similarity: Contains 1 MARVEL domain., tissue specificity: Expressed in the leukocytes, placenta and testis.,

Research Area

Image Data



Western blot analysis of lysates from Jurkat and COS cells, using CKLF3 Antibody. The lane on the right is blocked with the synthesized peptide.



Western Blot analysis of various cells using CMTM3 Polyclonal Antibody diluted at 1: 1000

Note

For research use only.