

Summary

Production Name	CLK1 Rabbit Polyclonal Antibody
Description	Rabbit Polyclonal Antibody
Host	Rabbit
Application	WB,IHC-P,IF-P,IF-F,ICC/IF,ELISA
Reactivity	Human,Mouse

Performance

Conjugation	Unconjugated
Modification	Unmodified
Isotype	IgG
Clonality	Polyclonal
Form	Liquid
Storage	Store at 4°C short term. Aliquot and store at -20°C long term. Avoid freeze/thaw cycles.
Buffer	Liquid in PBS containing 50% glycerol, 0.5% BSA and 0.02% New type preservative N.
Purification	Affinity purification

Immunogen

Gene Name	CLK1
Alternative Names	CLK1; CLK; Dual specificity protein kinase CLK1; CDC-like kinase 1
Gene ID	1195.0
SwissProt ID	P49759.The antiserum was produced against synthesized peptide derived from human CLK1. AA range:101-150

Application

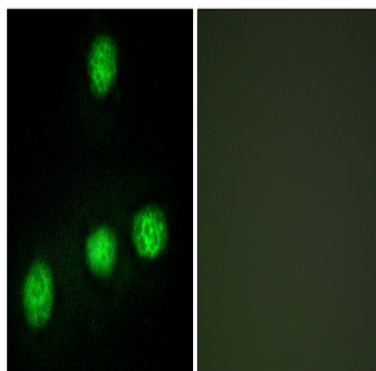
Dilution Ratio	WB 1:500-1:2000, IHC-P 1:100-1:300, IF-P/IF-F/ICC/IF 1:200-1:1000, ELISA 1:20000.Not yet tested in other applications.
Molecular Weight	57kDa

Background

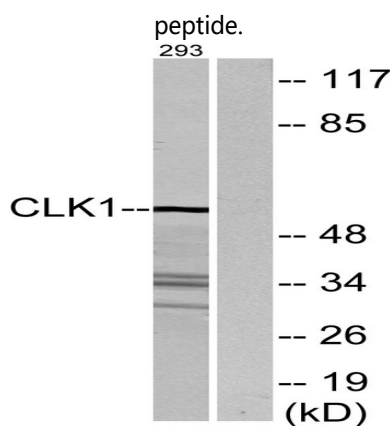
CDC like kinase 1 (CLK1) Homo sapiens This gene encodes a member of the CDC2-like (or LAMMER) family of dual specificity protein kinases. In the nucleus, the encoded protein phosphorylates serine/arginine-rich proteins involved in pre-mRNA processing, releasing them into the nucleoplasm. The choice of splice sites during pre-mRNA processing may be regulated by the concentration of transacting factors, including serine/arginine rich proteins. Therefore, the encoded protein may play an indirect role in governing splice site selection. Multiple transcript variants encoding different isoforms have been found for this gene. [provided by RefSeq, Jun 2009], catalytic activity: ATP + a protein = ADP + a phosphoprotein., function: Phosphorylates serine- and arginine-rich (SR) proteins of the spliceosomal complex may be a constituent of a network of regulatory mechanisms that enable SR proteins to control RNA splicing. Phosphorylates serines, threonines and tyrosines., PTM: Autophosphorylates on all three types of residues., similarity: Belongs to the protein kinase superfamily., similarity: Belongs to the protein kinase superfamily. CMGC Ser/Thr protein kinase family. Lammer subfamily., similarity: Contains 1 protein kinase domain., subunit: Interacts with PPIG.,

Research Area

Image Data



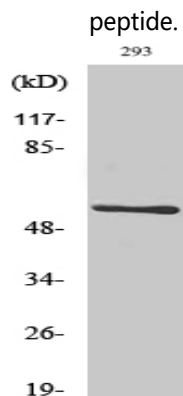
Immunofluorescence analysis of HUVEC cells, using CLK1 Antibody. The picture on the right is blocked with the synthesized



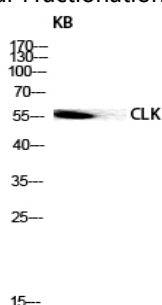
Product Name: CLK1 Rabbit Polyclonal Antibody
Catalog #: APRab09048



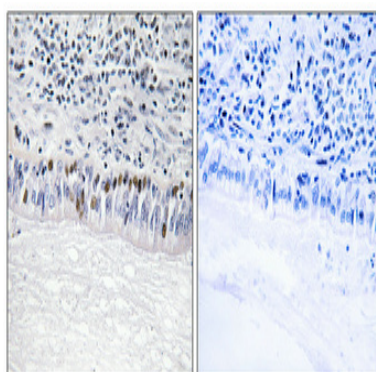
Western blot analysis of lysates from 293 cells, using CLK1 Antibody. The lane on the right is blocked with the synthesized peptide.



Western Blot analysis of various cells using CLK1 Polyclonal Antibody diluted at 1 : 500 cells nucleus extracted by Minute TM Cytoplasmic and Nuclear Fractionation kit (SC-003, Invent biotech, MN, USA) .



Western blot analysis of KB lysis using CLK1 antibody. Antibody was diluted at 1:500 cells nucleus extracted by Minute TM Cytoplasmic and Nuclear Fractionation kit (SC-003, Invent biotech, MN, USA) .



Immunohistochemical analysis of paraffin-embedded Human lung cancer. Antibody was diluted at 1:100 (4°, overnight) . High-pressure and temperature Tris-EDTA, pH 8.0 was used for antigen retrieval. Negative control (right) obtained from antibody was pre-absorbed by immunogen peptide.

Product Name: CLK1 Rabbit Polyclonal Antibody
Catalog #: APRab09048



Note

For research use only.