

Product Name: CLECSF6 Rabbit Polyclonal Antibody
Catalog #: APRab09035



Summary

Production Name	CLECSF6 Rabbit Polyclonal Antibody
Description	Rabbit Polyclonal Antibody
Host	Rabbit
Application	WB,ELISA
Reactivity	Human,Rat,Mouse

Performance

Conjugation	Unconjugated
Modification	Unmodified
Isotype	IgG
Clonality	Polyclonal
Form	Liquid
Storage	Store at 4°C short term. Aliquot and store at -20°C long term. Avoid freeze/thaw cycles.
Buffer	Liquid in PBS containing 50% glycerol, 0.5% BSA and 0.02% New type preservative N.
Purification	Affinity purification

Immunogen

Gene Name	CLEC4A
Alternative Names	C-type lectin domain family 4 member A (C-type lectin DDB27) (C-type lectin superfamily member 6) (Dendritic cell immunoreceptor) (Lectin-like immunoreceptor)
Gene ID	50856.0
SwissProt ID	Q9UMR7.The antiserum was produced against synthesized peptide derived from the C-terminal region of human CLEC4A. AA range:161-210

Application

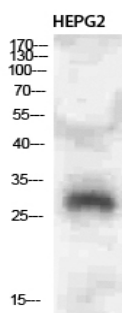
Dilution Ratio	WB 1:500-2000, ELISA 1:10000-20000
Molecular Weight	28kDa

Background

This gene encodes a member of the C-type lectin/C-type lectin-like domain (CTL/CTLD) superfamily. Members of this family share a common protein fold and have diverse functions, such as cell adhesion, cell-cell signalling, glycoprotein turnover, and roles in inflammation and immune response. The encoded type 2 transmembrane protein may play a role in inflammatory and immune response. Multiple transcript variants encoding distinct isoforms have been identified for this gene. This gene is closely linked to other CTL/CTLD superfamily members on chromosome 12p13 in the natural killer gene complex region. [provided by RefSeq, Jul 2008],domain:Contains 1 copy of a cytoplasmic motif that is referred to as the immunoreceptor tyrosine-based inhibitor motif (ITIM). This motif is involved in modulation of cellular responses. The phosphorylated ITIM motif can bind the SH2 domain of several SH2-containing phosphatases.,function:May be involved in regulating immune reactivity. May play a role in modulating dendritic cells (DC) differentiation and/or maturation. May be involved via its ITIM motif (immunoreceptor tyrosine-based inhibitory motifs) in the inhibition of B-cell-receptor-mediated calcium mobilization and protein tyrosine phosphorylation.,induction:Agonists of neutrophils GM-CSF, IL-3, IL-4 and IL-13 up-regulated mRNA expression of isoform 2.,online information:DCIR,similarity:Contains 1 C-type lectin domain.,subunit:May interact with PTPN6 via its ITIM motif.,tissue specificity:Expressed in dendritic cells, myeloid cells, B-cells and HL-60 cells (at protein level). TNF alpha, IL-1 alpha, and LPS, down-regulated expression at the surface of neutrophils (at protein level). Expressed preferentially in hematopoietic tissues. Expressed in peripheral blood leukocytes, neutrophils, moderate quantities in spleen, lymph node, and bone marrow, and at very low levels in thymus. Expressed in Ag-presenting cells (DC, monocytes, macrophages and B-cells), as well as on granulocytes. Expression was decreased in DC by signals inducing its maturation (e.g. CD40 ligand, LPS, and TNF alpha),

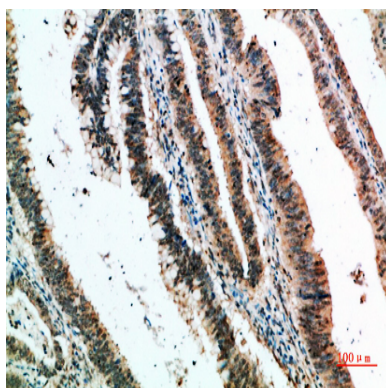
Research Area

Image Data

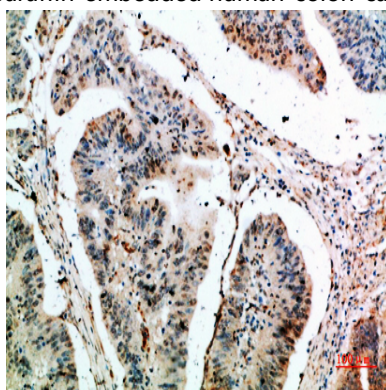


Western Blot analysis of HEPG2 cells using CLECSF6 Polyclonal Antibody diluted at 1:500. Secondary antibody was diluted at 1:20000

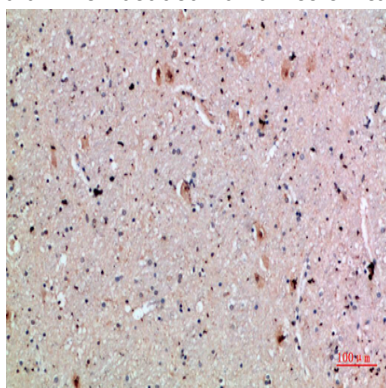
Product Name: CLECSF6 Rabbit Polyclonal Antibody
Catalog #: APRab09035



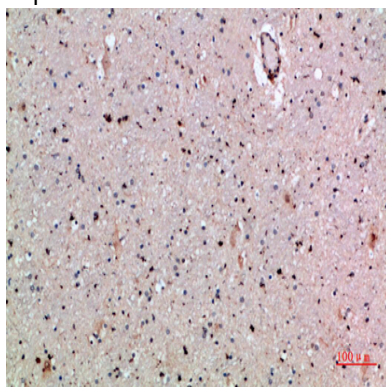
Immunohistochemical analysis of paraffin-embedded human-colon-cancer, antibody was diluted at 1:200



Immunohistochemical analysis of paraffin-embedded human-colon-cancer, antibody was diluted at 1:200



Immunohistochemical analysis of paraffin-embedded human-brain, antibody was diluted at 1:200



Product Name: CLECSF6 Rabbit Polyclonal Antibody
Catalog #: APRab09035



Immunohistochemical analysis of paraffin-embedded human-brain, antibody was diluted at 1:200

Note

For research use only.