

Product Name: Cleaved-PAR-4 (G48) Rabbit Polyclonal Antibody
Catalog #: APRab09023



Summary

Production Name	Cleaved-PAR-4 (G48) Rabbit Polyclonal Antibody
Description	Rabbit Polyclonal Antibody
Host	Rabbit
Application	WB,ELISA
Reactivity	Human,Rat,Mouse

Performance

Conjugation	Unconjugated
Modification	Unmodified
Isotype	IgG
Clonality	Polyclonal
Form	Liquid
Storage	Store at 4°C short term. Aliquot and store at -20°C long term. Avoid freeze/thaw cycles.
Buffer	Liquid in PBS containing 50% glycerol, 0.5% BSA and 0.02% New type preservative N.
Purification	Affinity purification

Immunogen

Gene Name	F2RL3
Alternative Names	F2RL3; PAR4; Proteinase-activated receptor 4; PAR-4; Coagulation factor II receptor-like 3; Thrombin receptor-like 3
Gene ID	9002.0
SwissProt ID	Q96RI0.The antiserum was produced against synthesized peptide derived from human PAR4. AA range:29-78

Application

Dilution Ratio	WB 1:500-1:2000, ELISA 1:5000.Not yet tested in other applications.
Molecular Weight	33kDa

Product Name: Cleaved-PAR-4 (G48) Rabbit Polyclonal Antibody
Catalog #: AP Rab09023



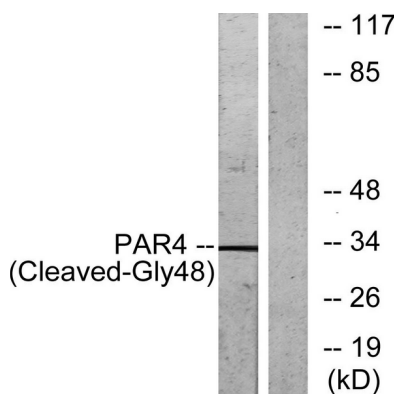
Background

This gene encodes a member of the protease-activated receptor subfamily, part of the G-protein coupled receptor 1 family of proteins. The encoded receptor is proteolytically processed to reveal an extracellular N-terminal tethered ligand that binds to and activates the receptor. This receptor plays a role in blood coagulation, inflammation and response to pain. Hypomethylation at this gene may be associated with lung cancer in human patients. [provided by RefSeq, Sep 2016],function:Receptor for activated thrombin or trypsin coupled to G proteins that stimulate phosphoinositide hydrolysis. May play a role in platelets activation.,PTM:A proteolytic cleavage generates a new N-terminus that functions as a tethered ligand.,similarity:Belongs to the G-protein coupled receptor 1 family.,tissue specificity:Widely expressed, with highest levels in lung, pancreas, thyroid, testis and small intestine. Not expressed in brain, kidney, spinal cord and peripheral blood leukocytes. Also detected in platelets.,

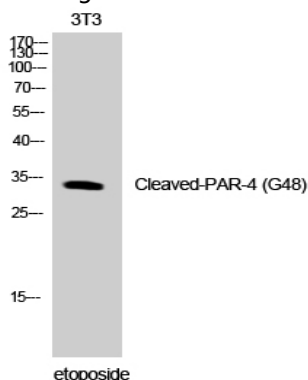
Research Area

Neuroactive ligand-receptor interaction;

Image Data



Western blot analysis of lysates from NIH/3T3 cells, treated with etoposide 25uM 1h, using PAR4 (Cleaved-Gly48) Antibody. The lane on the right is blocked with the synthesized peptide.



**Product Name: Cleaved-PAR-4 (G48) Rabbit Polyclonal
Antibody**
Catalog #: APRab09023



Western Blot analysis of NIH-3T3 cells using Cleaved-PAR-4 (G48) Polyclonal Antibody

Note

For research use only.