

Product Name: Cleaved-GGT4 HC (T472) Rabbit Polyclonal Antibody
Catalog #: APRab08993

Summary

Production Name	Cleaved-GGT4 HC (T472) Rabbit Polyclonal Antibody
Description	Rabbit Polyclonal Antibody
Host	Rabbit
Application	WB,ELISA
Reactivity	Human,Mouse,Rat

Performance

Conjugation	Unconjugated
Modification	Unmodified
Isotype	IgG
Clonality	Polyclonal
Form	Liquid
Storage	Store at 4°C short term. Aliquot and store at -20°C long term. Avoid freeze/thaw cycles.
Buffer	Liquid in PBS containing 50% glycerol, 0.5% BSA and 0.02% New type preservative N.
Purification	Affinity purification

Immunogen

Gene Name	GGT7
Alternative Names	GGT7; GGTL3; GGTL5; Gamma-glutamyltransferase 7; GGT 7; Gamma-glutamyltransferase-like 3; Gamma-glutamyltransferase-like 5; Gamma-glutamyltranspeptidase 7; Glutathione hydrolase 7
Gene ID	2686.0
SwissProt ID	Q9UJ14. The antiserum was produced against synthesized peptide derived from human Gamma-glutamyltransferase 4. AA range:423-472

Application

Dilution Ratio	WB 1:500-1:2000, ELISA 1:10000. Not yet tested in other applications.
Molecular Weight	50kDa

Product Name: Cleaved-GGT4 HC (T472) Rabbit Polyclonal Antibody
Catalog #: AP Rab08993



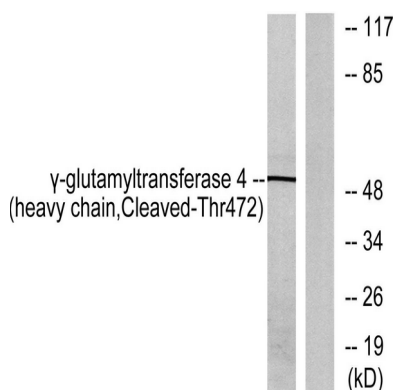
Background

This gene is a member of a gene family that encodes enzymes involved in both the metabolism of glutathione and in the transpeptidation of amino acids. Changes in the activity of gamma-glutamyltransferase may signal preneoplastic or toxic conditions in the liver or kidney. The protein encoded by this gene consists of a heavy and a light chain, and it can interact with CT120, a plasma membrane-associated protein that is possibly involved in lung carcinogenesis. [provided by RefSeq, Jul 2008], catalytic activity: (5-L-glutamyl)-peptide + an amino acid = peptide + 5-L-glutamyl amino acid., function: Cleaves glutathione conjugates., pathway: Sulfur metabolism; glutathione metabolism., similarity: Belongs to the gamma-glutamyltransferase family., subunit: Heterodimer composed of the light and heavy chains. The active site is located in the light chain (By similarity). Isoform 3 interacts with FAM57A., tissue specificity: Widely expressed, but at low level, except in the airway epithelial cells. Detected in brain, heart, kidney, liver, lung, spleen, testis and trachea.,

Research Area

Taurine and hypotaurine metabolism; Selenoamino acid metabolism; Cyanoamino acid metabolism; Glutathione metabolism; Arachidonic acid metabolism;

Image Data



Western blot analysis of lysates from Jurkat cells, treated with etoposide 25uM 24h, using Gamma-glutamyltransferase 4 (heavy chain, Cleaved-Thr472) Antibody. The lane on the right is blocked with the synthesized peptide.

Note

For research use only.