

Product Name: Cleaved-Ephrin-A2 (N188) Rabbit Polyclonal Antibody
Catalog #: APRab08985

Summary

Production Name	Cleaved-Ephrin-A2 (N188) Rabbit Polyclonal Antibody
Description	Rabbit Polyclonal Antibody
Host	Rabbit
Application	WB,ELISA
Reactivity	Human,Mouse

Performance

Conjugation	Unconjugated
Modification	Unmodified
Isotype	IgG
Clonality	Polyclonal
Form	Liquid
Storage	Store at 4°C short term. Aliquot and store at -20°C long term. Avoid freeze/thaw cycles.
Buffer	Liquid in PBS containing 50% glycerol, 0.5% BSA and 0.02% New type preservative N.
Purification	Affinity purification

Immunogen

Gene Name	EFNA2
Alternative Names	EFNA2; EPLG6; LERK6; Ephrin-A2; EPH-related receptor tyrosine kinase ligand 6; LERK-6; HEK7 ligand; HEK7-L
Gene ID	1943.0
SwissProt ID	O43921.The antiserum was produced against synthesized peptide derived from human EFNA2. AA range:139-188

Application

Dilution Ratio	WB 1:500-1:2000, ELISA 1:20000.Not yet tested in other applications.
Molecular Weight	21kDa

Product Name: Cleaved-Ephrin-A2 (N188) Rabbit Polyclonal Antibody
Catalog #: APRab08985

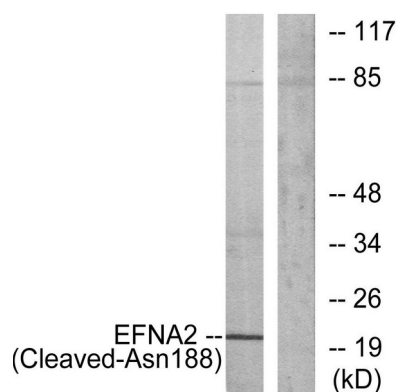
Background

This gene encodes a member of the ephrin family. The protein is composed of a signal sequence, a receptor-binding region, a spacer region, and a hydrophobic region. The EPH and EPH-related receptors comprise the largest subfamily of receptor protein-tyrosine kinases and have been implicated in mediating developmental events, particularly in the nervous system. Based on their structures and sequence relationships, ephrins are divided into the ephrin-A (EFNA) class, which are anchored to the membrane by a glycosylphosphatidylinositol linkage, and the ephrin-B (EFNB) class, which are transmembrane proteins. Posttranslational modifications determine whether this protein localizes to the nucleus or the cytoplasm. [provided by RefSeq, Jul 2008],similarity:Belongs to the ephrin family.,subunit:Binds to the receptor tyrosine kinases EPHA3, EPHA4 and EPHA5.,

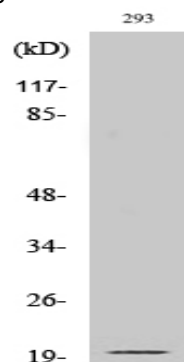
Research Area

Axon guidance;

Image Data



Western blot analysis of lysates from 293 cells, treated with etoposide 25uM 1h, using EFNA2 (Cleaved-Asn188) Antibody. The lane on the right is blocked with the synthesized peptide.



Western Blot analysis of various cells using Cleaved-Ephrin-A2 (N188) Polyclonal Antibody



**Product Name: Cleaved-Ephrin-A2 (N188) Rabbit
Polyclonal Antibody
Catalog #: APRab08985**

Note

For research use only.