

**Product Name: Cleaved-Cathepsin L2 (L114) Rabbit Polyclonal Antibody**  
**Catalog #: APRab08978**

---

## Summary

|                        |  |
|------------------------|--|
| <b>Production Name</b> | Cleaved-Cathepsin L2 (L114) Rabbit Polyclonal Antibody |
| <b>Description</b>     | Rabbit Polyclonal Antibody                             |
| <b>Host</b>            | Rabbit   |
| <b>Application</b>     | WB,ELISA   |
| <b>Reactivity</b>      | Human,Monkey   |

## Performance

|                     |  |
|---------------------|--|
| <b>Conjugation</b>  | Unconjugated   |
| <b>Modification</b> | Unmodified   |
| <b>Isotype</b>      | IgG  |
| <b>Clonality</b>    | Polyclonal   |
| <b>Form</b>         | Liquid   |
| <b>Storage</b>      | Store at 4°C short term. Aliquot and store at -20°C long term. Avoid freeze/thaw cycles. |
| <b>Buffer</b>       | Liquid in PBS containing 50% glycerol, 0.5% BSA and 0.02% New type preservative N.       |
| <b>Purification</b> | Affinity purification  |

## Immunogen

|                          |   |
|--------------------------|---|
| <b>Gene Name</b>         | CTSL2   |
| <b>Alternative Names</b> | CTSL2; CATL2; CTSU; CTSV; Cathepsin L2; Cathepsin U; Cathepsin V  |
| <b>Gene ID</b>           | 1515.0  |
| <b>SwissProt ID</b>      | O60911.The antiserum was produced against synthesized peptide derived from human CATL2. AA range:95-144 |

## Application

|                         |  |
|-------------------------|--|
| <b>Dilution Ratio</b>   | WB 1:500-1:2000, ELISA 1:20000.Not yet tested in other applications. |
| <b>Molecular Weight</b> | 37kDa  |

**Product Name: Cleaved-Cathepsin L2 (L114) Rabbit Polyclonal Antibody**  
**Catalog #: AP Rab08978**



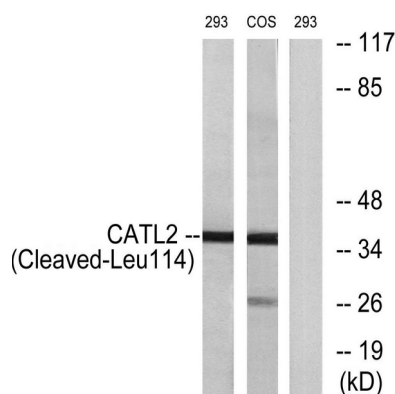
## Background

The protein encoded by this gene, a member of the peptidase C1 family, is a lysosomal cysteine proteinase that may play an important role in corneal physiology. This gene is expressed in colorectal and breast carcinomas but not in normal colon, mammary gland, or peritumoral tissues, suggesting a possible role for this gene in tumor processes. Alternatively spliced variants, encoding the same protein, have been identified. [provided by RefSeq, Jan 2011], catalytic activity: The recombinant enzyme hydrolyzes proteins (serum albumin, collagen) and synthetic substrates (Z-Phe-Arg-NHMec > Z-Leu-Arg-NHMec > Z-Val-Arg-NHMec), function: Cysteine protease. May have an important role in corneal physiology, similarity: Belongs to the peptidase C1 family, tissue specificity: Predominantly expressed in the thymus and testis. Also expressed in corneal epithelium, and to a lesser extent in conjunctival epithelium and skin.,

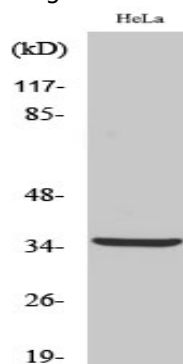
## Research Area

Lysosome;

## Image Data



Western blot analysis of lysates from 293 and COS cells, treated with etoposide 25uM 1h, using CATL2 (Cleaved-Leu114) Antibody. The lane on the right is blocked with the synthesized peptide.



Western Blot analysis of various cells using Cleaved-Cathepsin L2 (L114) Polyclonal Antibody

**Product Name: Cleaved-Cathepsin L2 (L114) Rabbit  
Polyclonal Antibody  
Catalog #: APRab08978**

---



**Note**

For research use only.