

Product Name: Cleaved-C1r LC (I464) Rabbit Polyclonal Antibody
Catalog #: APRab08950



Summary

Production Name	Cleaved-C1r LC (I464) Rabbit Polyclonal Antibody
Description	Rabbit Polyclonal Antibody
Host	Rabbit
Application	WB,ELISA
Reactivity	Human,Rat,Mouse

Performance

Conjugation	Unconjugated
Modification	Unmodified
Isotype	IgG
Clonality	Polyclonal
Form	Liquid
Storage	Store at 4°C short term. Aliquot and store at -20°C long term. Avoid freeze/thaw cycles.
Buffer	Liquid in PBS containing 50% glycerol, 0.5% BSA and 0.02% New type preservative N.
Purification	Affinity purification

Immunogen

Gene Name	C1R
Alternative Names	C1R; Complement C1r subcomponent; Complement component 1 subcomponent r
Gene ID	715.0
SwissProt ID	P00736.The antiserum was produced against synthesized peptide derived from human C1R. AA range:445-494

Application

Dilution Ratio	WB 1:500-1:2000, ELISA 1:20000.Not yet tested in other applications.
Molecular Weight	27kDa

Product Name: Cleaved-C1r LC (I464) Rabbit Polyclonal Antibody
Catalog #: AP Rab08950



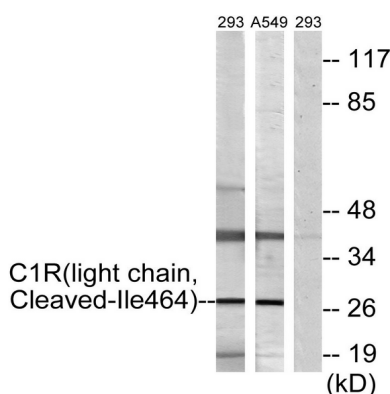
Background

catalytic activity: Selective cleavage of Lys(or Arg)-|-Ile bond in complement subcomponent C1s to form the active form of C1s (EC 3.4.21.42)., function: C1r B chain is a serine protease that combines with C1q and C1s to form C1, the first component of the classical pathway of the complement system., polymorphism: Complement component C1r deficiency [MIM:216950] leads to the failure of the classical complement system activation pathway (C1 deficiency). Individuals with C1 deficiency are highly susceptible to infections by microorganisms and have greater risk in developing autoimmune diseases such as systemic lupus erythematosus (SLE)., PTM: The iron and 2-oxoglutarate dependent 3-hydroxylation of aspartate and asparagine is (R) stereospecific within EGF domains., similarity: Belongs to the peptidase S1 family., similarity: Contains 1 EGF-like domain., similarity: Contains 1 peptidase S1 domain., similarity: Contains 2 CUB domains., similarity: Contains 2 Sushi (CCP/SCR) domains., subunit: C1 is a calcium-dependent trimolecular complex of C1q, C1r and C1s in the molar ratio of 1:2:2. C1r is a dimer of identical chains, each of which is activated by cleavage into two chains, A and B, connected by disulfide bonds., catalytic activity: Selective cleavage of Lys(or Arg)-|-Ile bond in complement subcomponent C1s to form the active form of C1s (EC 3.4.21.42)., function: C1r B chain is a serine protease that combines with C1q and C1s to form C1, the first component of the classical pathway of the complement system., polymorphism: Complement component C1r deficiency [MIM:216950] leads to the failure of the classical complement system activation pathway (C1 deficiency). Individuals with C1 deficiency are highly susceptible to infections by microorganisms and have greater risk in developing autoimmune diseases such as systemic lupus erythematosus (SLE)., PTM: The iron and 2-oxoglutarate dependent 3-hydroxylation of aspartate and asparagine is (R) stereospecific within EGF domains., similarity: Belongs to the peptidase S1 family., similarity: Contains 1 EGF-like domain., similarity: Contains 1 peptidase S1 domain., similarity: Contains 2 CUB domains., similarity: Contains 2 Sushi (CCP/SCR) domains., subunit: C1 is a calcium-dependent trimolecular complex of C1q, C1r and C1s in the molar ratio of 1:2:2. C1r is a dimer of identical chains, each of which is activated by cleavage into two chains, A and B, connected by disulfide bonds.,

Research Area

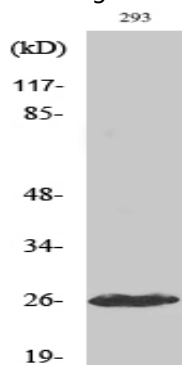
Complement and coagulation cascades; Systemic lupus erythematosus;

Image Data



Product Name: Cleaved-C1r LC (I464) Rabbit Polyclonal Antibody
Catalog #: APRab08950

Western blot analysis of lysates from 293 and A549 cells, treated with etoposide 25uM 1h, using C1R (light chain,Cleaved-Ile464) Antibody. The lane on the right is blocked with the synthesized peptide.



Western Blot analysis of various cells using Cleaved-C1r LC (I464) Polyclonal Antibody

Note

For research use only.