

**Product Name: Cleaved-Bad (D71) Rabbit Polyclonal Antibody**  
**Catalog #: APRab08948**

---



## Summary

<b>Production Name</b>	Cleaved-Bad (D71) Rabbit Polyclonal Antibody
<b>Description</b>	Rabbit Polyclonal Antibody
<b>Host</b>	Rabbit
<b>Application</b>	WB,IHC-P,IF-P,IF-F,ICC/IF,ELISA
<b>Reactivity</b>	Mouse,Rat

## Performance

<b>Conjugation</b>	Unconjugated
<b>Modification</b>	Unmodified
<b>Isotype</b>	IgG
<b>Clonality</b>	Polyclonal
<b>Form</b>	Liquid
<b>Storage</b>	Store at 4°C short term. Aliquot and store at -20°C long term. Avoid freeze/thaw cycles.
<b>Buffer</b>	Liquid in PBS containing 50% glycerol, 0.5% BSA and 0.02% New type preservative N.
<b>Purification</b>	Affinity purification

## Immunogen

<b>Gene Name</b>	BAD
<b>Alternative Names</b>	BAD; BBC6; BCL2L8; Bcl2 antagonist of cell death; BAD; Bcl-2-binding component 6; Bcl-2-like protein 8; Bcl2-L-8; Bcl-XL/Bcl-2-associated death promoter
<b>Gene ID</b>	64639.0
<b>SwissProt ID</b>	O35147.The antiserum was produced against synthesized peptide derived from mouse BAD. AA range:21-70

## Application

<b>Dilution Ratio</b>	WB 1:500-1:2000, IHC-P 1:100-1:300, ELISA 1:20000, IF-P/IF-F/ICC/IF 1:50-200
<b>Molecular Weight</b>	20kDa

**Product Name: Cleaved-Bad (D71) Rabbit Polyclonal Antibody**  
**Catalog #: AP Rab08948**



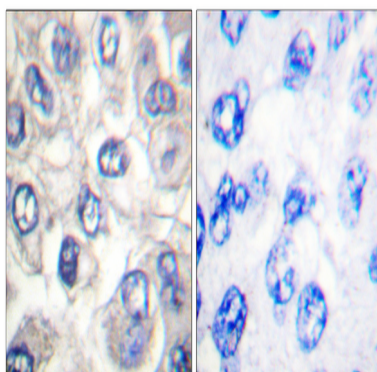
## Background

BCL2 associated agonist of cell death encoded by BAD is a member of the BCL-2 family. BCL-2 family members are known to be regulators of programmed cell death. BCL2 associated agonist of cell death positively regulates cell apoptosis by forming heterodimers with BCL-xL and BCL-2, and reversing their death repressor activity. Proapoptotic activity of BCL2 associated agonist of cell death is regulated through its phosphorylation. Protein kinases AKT and MAP kinase, as well as protein phosphatase calcineurin were found to be involved in the regulation of BCL2 associated agonist of cell death. Alternative splicing of BAD results in two transcript variants which encode the same isoform.

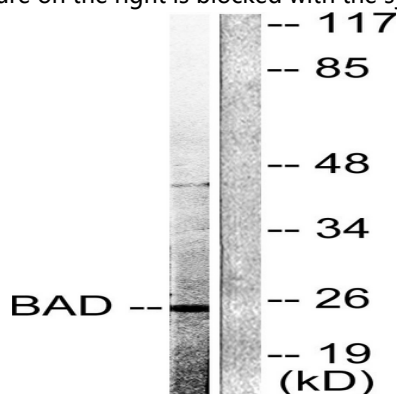
## Research Area

Stem cell pathway; Insulin Receptor; PI3K/Akt; ErbB/HER

## Image Data



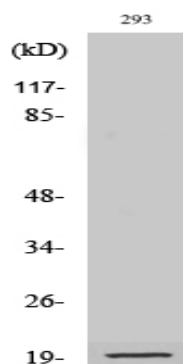
Immunohistochemistry analysis of paraffin-embedded human breast carcinoma tissue, using BAD (Cleaved-Asp71) Antibody. The picture on the right is blocked with the synthesized peptide.



Western blot analysis of lysates from 293 cells, treated with Etoposide 25uM 60', using BAD (Cleaved-Asp71) Antibody. The lane on the right is blocked with the synthesized peptide.

**Product Name: Cleaved-Bad (D71) Rabbit Polyclonal Antibody**  
**Catalog #: APRab08948**

---



Western Blot analysis of various cells using Cleaved-Bad (D71) Polyclonal Antibody

### **Note**

For research use only.