

**Product Name: CKR-1 Rabbit Polyclonal Antibody**  
**Catalog #: APRab08866**



## Summary

<b>Production Name</b>	CKR-1 Rabbit Polyclonal Antibody
<b>Description</b>	Rabbit Polyclonal Antibody
<b>Host</b>	Rabbit
<b>Application</b>	IHC-P,IF-P,IF-F,ICC/IF,ELISA
<b>Reactivity</b>	Human,Rat,Mouse

## Performance

<b>Conjugation</b>	Unconjugated
<b>Modification</b>	Unmodified
<b>Isotype</b>	IgG
<b>Clonality</b>	Polyclonal
<b>Form</b>	Liquid
<b>Storage</b>	Store at 4°C short term. Aliquot and store at -20°C long term. Avoid freeze/thaw cycles.
<b>Buffer</b>	Liquid in PBS containing 50% glycerol, 0.5% BSA and 0.02% New type preservative N.
<b>Purification</b>	Affinity purification

## Immunogen

<b>Gene Name</b>	CCR1 CMKBR1 CMKR1 SCYAR1
<b>Alternative Names</b>	C-C chemokine receptor type 1 (C-C CKR-1;CC-CKR-1;CCR-1;CCR1;HM145;LD78 receptor;Macrophage inflammatory protein 1-alpha receptor;MIP-1alpha-R;RANTES-R;CD antigen CD191)
<b>Gene ID</b>	1230.0
<b>SwissProt ID</b>	P32246.Synthetic peptide from human protein at AA range: 151-200

## Application

<b>Dilution Ratio</b>	IHC-P 1:50-200, ELISA 1:10000-20000, IF-P/IF-F/ICC/IF 1:50-200
<b>Molecular Weight</b>	

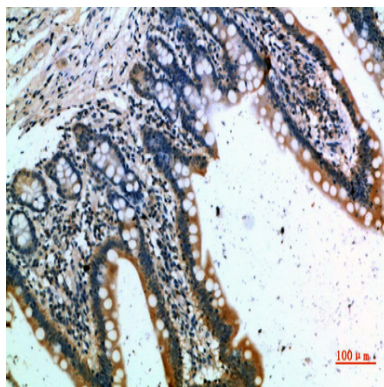
## Background

This gene encodes a member of the beta chemokine receptor family, which is predicted to be a seven transmembrane protein similar to G protein-coupled receptors. The ligands of this receptor include macrophage inflammatory protein 1 alpha (MIP-1 alpha), regulated on activation normal T expressed and secreted protein (RANTES), monocyte chemoattractant protein 3 (MCP-3), and myeloid progenitor inhibitory factor-1 (MPIF-1). Chemokines and their receptors mediated signal transduction are critical for the recruitment of effector immune cells to the site of inflammation. Knockout studies of the mouse homolog suggested the roles of this gene in host protection from inflammatory response, and susceptibility to virus and parasite. This gene and other chemokine receptor genes, including CCR2, CCRL2, CCR3, CCR5 and CCXCR1, are found to form a gene cluster on chromosome 3p. [provided by RefSeq, Jul 2008]function:Receptor for a C-C type chemokine. Binds to MIP-1-alpha, MIP-1-delta, RANTES, and MCP-3 and, less efficiently, to MIP-1-beta or MCP-1 and subsequently transduces a signal by increasing the intracellular calcium ions level. Responsible for affecting stem cell proliferation.,online information:CC chemokine receptors entry,similarity:Belongs to the G-protein coupled receptor 1 family.,tissue specificity:Widely expressed in different hematopoietic cells.,

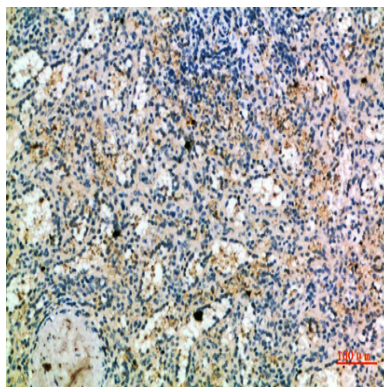
## Research Area

Cytokine-cytokine receptor interaction;Chemokine;

## Image Data



Immunohistochemical analysis of paraffin-embedded human-small-intestine, antibody was diluted at 1:200



**Product Name: CKR-1 Rabbit Polyclonal Antibody**  
**Catalog #: APRab08866**



---

Immunohistochemical analysis of paraffin-embedded human-spleen, antibody was diluted at 1:200

**Note**

For research use only.