

Summary

Production Name	CIP29 Rabbit Polyclonal Antibody
Description	Rabbit Polyclonal Antibody
Host	Rabbit
Application	WB,IHC-P,IF-P,IF-F,ICC/IF,ELISA
Reactivity	Human,Mouse,Rat

Performance

Conjugation	Unconjugated
Modification	Unmodified
Isotype	IgG
Clonality	Polyclonal
Form	Liquid
Storage	Store at 4°C short term. Aliquot and store at -20°C long term. Avoid freeze/thaw cycles.
Buffer	Liquid in PBS containing 50% glycerol, 0.5% BSA and 0.02% New type preservative N.
Purification	Affinity purification

Immunogen

Gene Name	SARNP
Alternative Names	SARNP; HCC1; HSPC316; SAP domain-containing ribonucleoprotein; Cytokine-induced protein of 29 kDa; Nuclear protein Hcc-1; Proliferation-associated cytokine-inducible protein CIP29
Gene ID	84324.0
SwissProt ID	P82979.The antiserum was produced against synthesized peptide derived from human HCC1. AA range:147-196

Application

Dilution Ratio	WB 1:500-1:2000, IHC-P 1:100-1:300, ELISA 1:10000, IF-P/IF-F/ICC/IF 1:50-200
Molecular Weight	30kDa

Product Name: CIP29 Rabbit Polyclonal Antibody
Catalog #: APRab08817

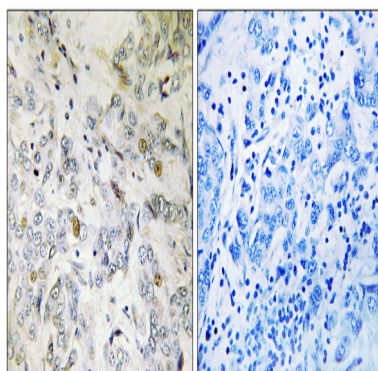


Background

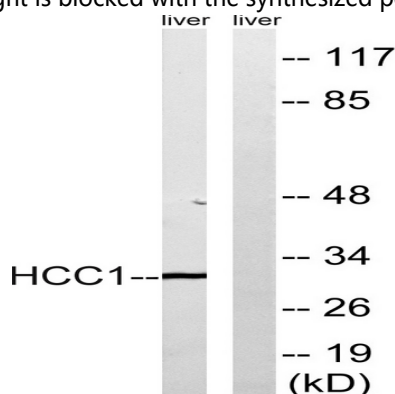
This gene encodes a protein that is upregulated in response to various cytokines. The encoded protein may play a role in cell cycle progression. A translocation between this gene and the myeloid/lymphoid leukemia gene, resulting in expression of a chimeric protein, has been associated with acute myelomonocytic leukemia. Pseudogenes exist on chromosomes 7 and 8. Alternatively spliced transcript variants have been described. [provided by RefSeq, Feb 2009],transcription, regulation of transcription, DNA-dependent, regulation of translation, posttranscriptional regulation of gene expression, regulation of cellular protein metabolic process, regulation of transcription, regulation of RNA metabolic process,

Research Area

Image Data



Immunohistochemistry analysis of paraffin-embedded human breast carcinoma tissue, using HCC1 Antibody. The picture on the right is blocked with the synthesized peptide.



Western blot analysis of lysates from mouse liver, using HCC1 Antibody. The lane on the right is blocked with the synthesized peptide.

Product Name: CIP29 Rabbit Polyclonal Antibody
Catalog #: APRab08817



Note

For research use only.