

Product Name: CIDE-3 Rabbit Polyclonal Antibody
Catalog #: APRab08812



Summary

Production Name	CIDE-3 Rabbit Polyclonal Antibody
Description	Rabbit Polyclonal Antibody
Host	Rabbit
Application	IHC-P,IF-P,IF-F,ICC/IF,ELISA
Reactivity	Human,Rat,Mouse

Performance

Conjugation	Unconjugated
Modification	Unmodified
Isotype	IgG
Clonality	Polyclonal
Form	Liquid
Storage	Store at 4°C short term. Aliquot and store at -20°C long term. Avoid freeze/thaw cycles.
Buffer	Liquid in PBS containing 50% glycerol, 0.5% BSA and 0.02% New type preservative N.
Purification	Affinity purification

Immunogen

Gene Name	CIDEc
Alternative Names	CIDEc; FSP27; Cell death activator CIDE-3; Cell death-inducing DFFA-like effector protein C; Fat-specific protein FSP27 homolog
Gene ID	63924.0
SwissProt ID	Q96AQ7.The antiserum was produced against synthesized peptide derived from human CIDEc. AA range:189-238

Application

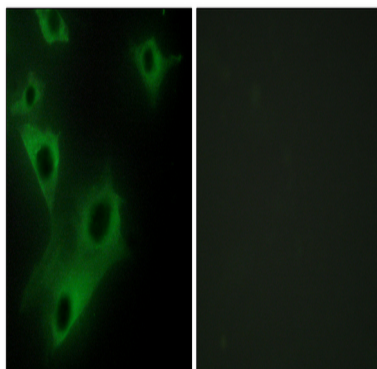
Dilution Ratio	IHC-P 1:100-1:300, IF-P/IF-F/ICC/IF 1:200-1:1000, ELISA 1:5000.Not yet tested in other applications.
Molecular Weight	

Background

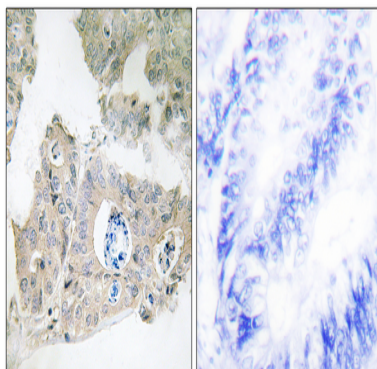
cell death inducing DFFA like effector c(CIDE) Homo sapiens This gene encodes a member of the cell death-inducing DNA fragmentation factor-like effector family. Members of this family play important roles in apoptosis. The encoded protein promotes lipid droplet formation in adipocytes and may mediate adipocyte apoptosis. This gene is regulated by insulin and its expression is positively correlated with insulin sensitivity. Mutations in this gene may contribute to insulin resistant diabetes. A pseudogene of this gene is located on the short arm of chromosome 3. Alternatively spliced transcript variants that encode different isoforms have been observed for this gene. [provided by RefSeq, Dec 2010],function:Isoforms 1 and 2 induce apoptosis.,similarity:Contains 1 CIDE-N domain.,subcellular location:Cytoplasmic in a punctate manner.,tissue specificity:Expressed mainly in small intestine, heart, colon and stomach and, at lower levels, in brain, kidney and liver.,

Research Area

Image Data



Immunofluorescence analysis of HeLa cells, using CIDE antibody. The picture on the right is blocked with the synthesized peptide.



Immunohistochemistry analysis of paraffin-embedded human colon carcinoma tissue, using CIDE antibody. The picture on

Product Name: CIDE-3 Rabbit Polyclonal Antibody
Catalog #: APRab08812



the right is blocked with the synthesized peptide.

Note

For research use only.