

**Product Name: CHST13 Rabbit Polyclonal Antibody**  
**Catalog #: APRab08786**



## Summary

<b>Production Name</b>	CHST13 Rabbit Polyclonal Antibody
<b>Description</b>	Rabbit Polyclonal Antibody
<b>Host</b>	Rabbit
<b>Application</b>	WB,IHC-P,IF-P,IF-F,ICC/IF,ELISA
<b>Reactivity</b>	Human,Rat,Mouse

## Performance

<b>Conjugation</b>	Unconjugated
<b>Modification</b>	Unmodified
<b>Isotype</b>	IgG
<b>Clonality</b>	Polyclonal
<b>Form</b>	Liquid
<b>Storage</b>	Store at 4°C short term. Aliquot and store at -20°C long term. Avoid freeze/thaw cycles.
<b>Buffer</b>	Liquid in PBS containing 50% glycerol, 0.5% BSA and 0.02% New type preservative N.
<b>Purification</b>	Affinity purification

## Immunogen

<b>Gene Name</b>	CHST13
<b>Alternative Names</b>	CHST13; Carbohydrate sulfotransferase 13; Chondroitin 4-O-sulfotransferase 3; Chondroitin 4-sulfotransferase 3; C4ST-3; C4ST3
<b>Gene ID</b>	166012.0
<b>SwissProt ID</b>	Q8NET6.The antiserum was produced against synthesized peptide derived from human CHST13. AA range:211-260

## Application

<b>Dilution Ratio</b>	WB 1:500-1:2000, IHC-P 1:100-1:300, ELISA 1:40000, IF-P/IF-F/ICC/IF 1:50-200
<b>Molecular Weight</b>	39kDa

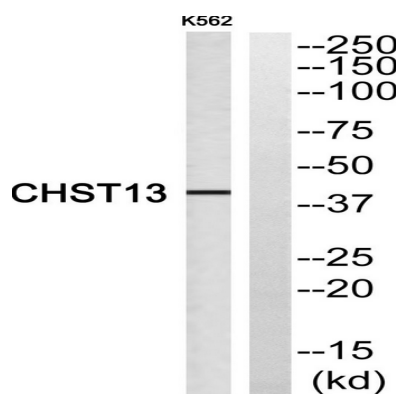
## Background

The protein encoded by this gene belongs to the sulfotransferase 2 family. It is localized to the golgi membrane, and catalyzes the transfer of sulfate to the C4 hydroxyl of beta-1,4-linked N-acetylgalactosamine (GalNAc) flanked by glucuronic acid residue in chondroitin. Chondroitin sulfate constitutes the predominant proteoglycan present in cartilage and is distributed on the surfaces of many cells and extracellular matrices. [provided by RefSeq, Aug 2011], catalytic activity: 3'-phosphoadenylyl sulfate + chondroitin = adenosine 3',5'-bisphosphate + chondroitin 4'-sulfate., function: Catalyzes the transfer of sulfate to position 4 of the N-acetylgalactosamine (GalNAc) residue of chondroitin. Chondroitin sulfate constitutes the predominant proteoglycan present in cartilage and is distributed on the surfaces of many cells and extracellular matrices. Transfers sulfate to the C4 hydroxyl of beta1,4-linked GalNAc that is substituted with a beta-linked glucuronic acid at the C-3 hydroxyl. No activity toward dermatan., similarity: Belongs to the sulfotransferase 2 family., tissue specificity: Highly expressed in adult liver. Expressed at lower level in kidney, lymph nodes and fetal kidney.,

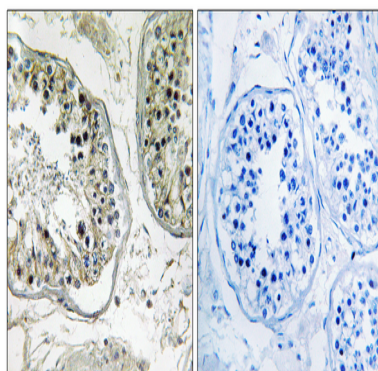
## Research Area

Chondroitin sulfate biosynthesis; Sulfur metabolism;

## Image Data



Western blot analysis of CHST13 Antibody. The lane on the right is blocked with the CHST13 peptide.



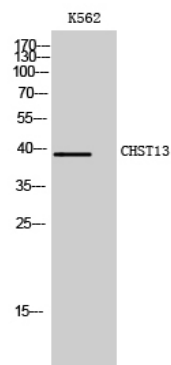
Immunohistochemistry analysis of paraffin-embedded human testis, using CHST13 Antibody. The lane on the right is

**Product Name: CHST13 Rabbit Polyclonal Antibody**  
**Catalog #: APRab08786**

---



blocked with the CHST13 peptide.



Western Blot analysis of K562 cells using CHST13 Polyclonal Antibody

### **Note**

For research use only.