

Product Name: CHP2 Rabbit Polyclonal Antibody
Catalog #: APRab08779



Summary

Production Name	CHP2 Rabbit Polyclonal Antibody
Description	Rabbit Polyclonal Antibody
Host	Rabbit
Application	WB,ELISA
Reactivity	Human,Mouse,Rat

Performance

Conjugation	Unconjugated
Modification	Unmodified
Isotype	IgG
Clonality	Polyclonal
Form	Liquid
Storage	Store at 4°C short term. Aliquot and store at -20°C long term. Avoid freeze/thaw cycles.
Buffer	Liquid in PBS containing 50% glycerol, 0.5% BSA and 0.02% New type preservative N.
Purification	Affinity purification

Immunogen

Gene Name	CHP2
Alternative Names	CHP2; HCA520; Calcineurin B homologous protein 2; Hepatocellular carcinoma-associated antigen 520
Gene ID	63928.0
SwissProt ID	O43745.The antiserum was produced against synthesized peptide derived from human CHP2. AA range:101-150

Application

Dilution Ratio	WB 1:500-1:2000, ELISA 1:40000.Not yet tested in other applications.
Molecular Weight	22kDa

Background

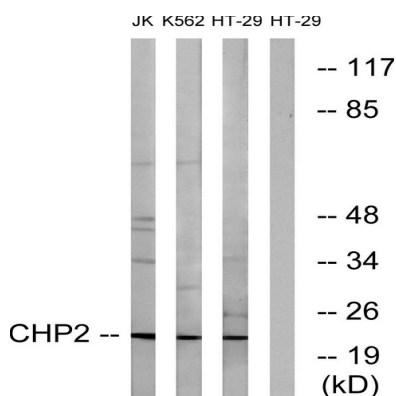
This gene product is a small calcium-binding protein that regulates cell pH by controlling plasma membrane-type Na⁺/H⁺ exchange activity. This protein shares sequence similarity with calcineurin B and can bind to and stimulate the protein phosphatase activity of calcineurin A (CnA) and functions in the calcineurin/NFAT (nuclear factor of activated T cells) signaling pathway. Another member of the CHP subfamily, Calcineurin B homologous protein 1, is located on Chromosome 15 and is an inhibitor of calcineurin activity and has a genetic phenotype associated with Parkinson's Disease (OMIM:606988). This gene was initially identified as a tumor-associated antigen and was previously referred to as Hepatocellular carcinoma-associated antigen 520. [provided by RefSeq, Jul 2013],function: Binds to and activates SLC9A1/NHE1 in a serum-independent manner, thus increasing pH and protecting cells from serum deprivation-induced death.,similarity: Contains 4 EF-hand domains.,subunit: Binds to SLC9A1/NHE1.,tissue specificity: Expressed in malignantly transformed cells but not detected in normal tissues.,

Research Area

MAPK_ERK_Growth;MAPK_G_Protein;Calcium;Oocyte

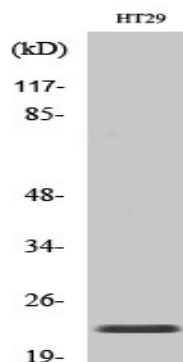
meiosis;Apoptosis_Inhibition;Apoptosis_Mitochondrial;Apoptosis_Overview;WNT;WNT-T CELL Axon guidance;VEGF;Natural killer cell mediated cytotoxicity;T_Cell_Receptor;B_Cell_Antigen;Long-term potentiation;Alzheimer's disease;Amyotrophic lateral sclerosis (ALS);

Image Data



Western blot analysis of lysates from HT-29, K562, and Jurkat cells, using CHP2 Antibody. The lane on the right is blocked with the synthesized peptide.

Product Name: CHP2 Rabbit Polyclonal Antibody
Catalog #: APRab08779



Western Blot analysis of various cells using CHP2 Polyclonal Antibody

Note

For research use only.