

Product Name: Che-1 Rabbit Polyclonal Antibody
Catalog #: APRab08752



Summary

Production Name	Che-1 Rabbit Polyclonal Antibody
Description	Rabbit Polyclonal Antibody
Host	Rabbit
Application	WB,IHC-P,IF-P,IF-F,ICC/IF,ELISA
Reactivity	Human,Mouse,Rat

Performance

Conjugation	Unconjugated
Modification	Unmodified
Isotype	IgG
Clonality	Polyclonal
Form	Liquid
Storage	Store at 4°C short term. Aliquot and store at -20°C long term. Avoid freeze/thaw cycles.
Buffer	Liquid in PBS containing 50% glycerol, 0.5% BSA and 0.02% New type preservative N.
Purification	Affinity purification

Immunogen

Gene Name	AATF
Alternative Names	AATF; CHE1; DED; HSPC277; Protein AATF; Apoptosis-antagonizing transcription factor; Rb-binding protein Che-1
Gene ID	26574.0
SwissProt ID	Q9NY61.The antiserum was produced against synthesized peptide derived from human AATF. AA range:10-59

Application

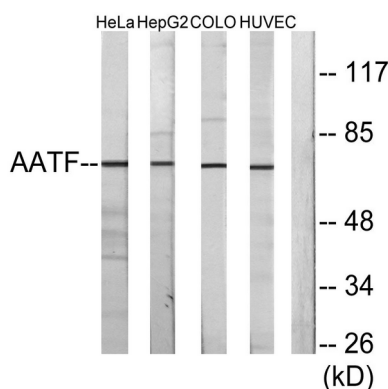
Dilution Ratio	WB 1:500-1:2000, IHC-P 1:100-1:300, ELISA 1:10000, IF-P/IF-F/ICC/IF 1:50-200
Molecular Weight	70kDa

Background

The protein encoded by this gene was identified on the basis of its interaction with MAP3K12/DLK, a protein kinase known to be involved in the induction of cell apoptosis. This gene product contains a leucine zipper, which is a characteristic motif of transcription factors, and was shown to exhibit strong transactivation activity when fused to Gal4 DNA binding domain. Overexpression of this gene interfered with MAP3K12 induced apoptosis. [provided by RefSeq, Jul 2008],function:May function as a general inhibitor of the histone deacetylase HDAC1. Binding to the pocket region of RB1 may displace HDAC1 from RB1/E2F complexes, leading to activation of E2F target genes and cell cycle progression. Conversely, displacement of HDAC1 from SP1 bound to the CDKN1A promoter leads to increased expression of this CDK inhibitor and blocks cell cycle progression. Also antagonizes PAWR mediated induction of aberrant amyloid peptide production in Alzheimer disease (presenile and senile dementia), although the molecular basis for this phenomenon has not been described to date.,PTM:Hyperphosphorylated during the G1/S phase transition.,similarity:Belongs to the AATF family.,subunit: Binds PAWR, POLR2J, RB1/RB, RBL1/P107, RBL2/P130, and SP1. May also bind MAPT.,tissue specificity:Ubiquitously expressed. Expressed at high levels in brain, heart, kidney, placenta and thymus.,

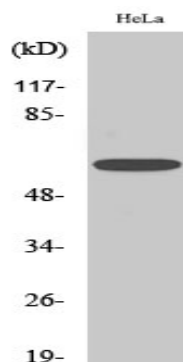
Research Area

Image Data



Western blot analysis of lysates from HeLa cells, HepG2 cells, COLO205 cells, and HUVEC cells, using AATF Antibody. The lane on the right is blocked with the synthesized peptide.

Product Name: Che-1 Rabbit Polyclonal Antibody
Catalog #: APRab08752



Western Blot analysis of various cells using Che-1 Polyclonal Antibody

Note

For research use only.