

Product Name: Cerebellin 3 Rabbit Polyclonal Antibody
Catalog #: APRab08681



Summary

Production Name	Cerebellin 3 Rabbit Polyclonal Antibody
Description	Rabbit Polyclonal Antibody
Host	Rabbit
Application	IHC-P,IF-P,IF-F,ICC/IF,WB,ELISA
Reactivity	Human,Mouse

Performance

Conjugation	Unconjugated
Modification	Unmodified
Isotype	IgG
Clonality	Polyclonal
Form	Liquid
Storage	Store at 4°C short term. Aliquot and store at -20°C long term. Avoid freeze/thaw cycles.
Buffer	Liquid in PBS containing 50% glycerol, 0.5% BSA and 0.02% New type preservative N.
Purification	Affinity purification

Immunogen

Gene Name	CBLN3
Alternative Names	CBLN3; Cerebellin-3
Gene ID	643866.0
SwissProt ID	Q6UW01. The antiserum was produced against synthesized peptide derived from human CBLN3. AA range:131-180

Application

Dilution Ratio	WB 1:500-2000, IHC-P 1:100-1:300, ELISA 1:40000, IF-P/IF-F/ICC/IF 1:50-200
Molecular Weight	27kDa

Background

Members of the precerebellin family, such as CBLN3, contain a cerebellin motif (see CBLN1; MIM 600432) and a C-terminal

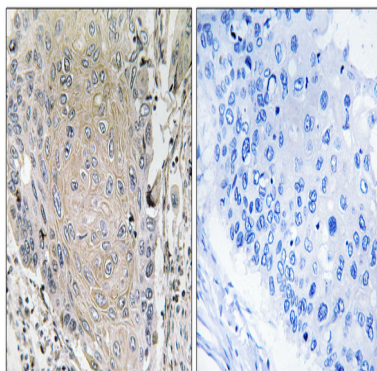
Product Name: Cerebellin 3 Rabbit Polyclonal Antibody
Catalog #: APRab08681



C1q signature domain (see MIM 120550) that mediates trimeric assembly of atypical collagen complexes. However, precerebellins do not contain a collagen motif, suggesting that they are not conventional components of the extracellular matrix (Pang et al., 2000 [PubMed 10964938]).[supplied by OMIM, Aug 2009],function:May be involved in synaptic functions in the CNS.,similarity:Contains 1 C1q domain.,subcellular location:Secretion depends probably on a association with CBLN1 or perhaps CBLN4 but not on CBLN2.,subunit:Heterohexamer; disulfide-linked heterotrimers. Does not homooligomerize, but probably forms a complex with at least CBLN1. May interact with CBLN2 and CBLN4.,

Research Area

Image Data



Immunohistochemistry analysis of paraffin-embedded human lung carcinoma tissue, using CBLN3 Antibody. The picture on the right is blocked with the synthesized peptide.

Note

For research use only.