

Summary

Production Name	CEP78 Rabbit Polyclonal Antibody
Description	Rabbit Polyclonal Antibody
Host	Rabbit
Application	WB,IHC-P,IF-P,IF-F,ICC/IF,ELISA
Reactivity	Human,Mouse

Performance

Conjugation	Unconjugated
Modification	Unmodified
Isotype	IgG
Clonality	Polyclonal
Form	Liquid
Storage	Store at 4°C short term. Aliquot and store at -20°C long term. Avoid freeze/thaw cycles.
Buffer	Liquid in PBS containing 50% glycerol, 0.5% BSA and 0.02% New type preservative N.
Purification	Affinity purification

Immunogen

Gene Name	CEP78
Alternative Names	CEP78; C9orf81; Centrosomal protein of 78 kDa; Cep78
Gene ID	84131.0
SwissProt ID	Q5JTW2.The antiserum was produced against synthesized peptide derived from human CEP78. AA range:301-350

Application

Dilution Ratio	WB 1:500-1:2000, IHC-P 1:100-1:300, ELISA 1:20000, IF-P/IF-F/ICC/IF 1:50-200
Molecular Weight	80kDa

Background

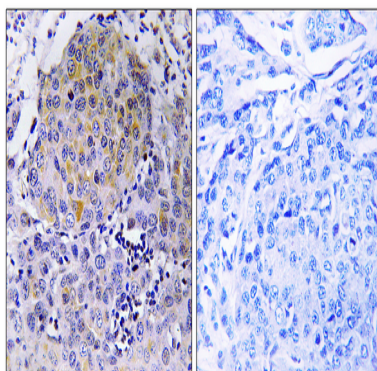
Product Name: CEP78 Rabbit Polyclonal Antibody
Catalog #: APRab08674



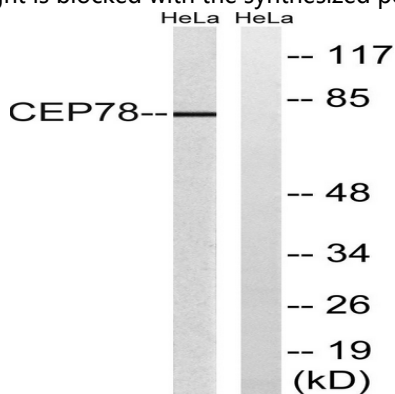
similarity:Belongs to the CEP78 family.,similarity:Contains 3 LRR (leucine-rich) repeats.,similarity:Belongs to the CEP78 family.,similarity:Contains 3 LRR (leucine-rich) repeats.,

Research Area

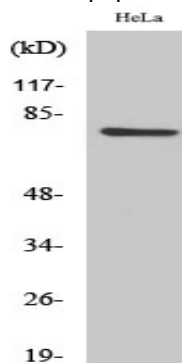
Image Data



Immunohistochemistry analysis of paraffin-embedded human breast carcinoma tissue, using CEP78 Antibody. The picture on the right is blocked with the synthesized peptide.



Western blot analysis of lysates from HeLa cells, using CEP78 Antibody. The lane on the right is blocked with the synthesized peptide.



Product Name: CEP78 Rabbit Polyclonal Antibody
Catalog #: APRab08674



Western Blot analysis of various cells using CEP78 Polyclonal Antibody

Note

For research use only.