

Product Name: CEP41 Rabbit Polyclonal Antibody
Catalog #: APRab08664



Summary

Production Name	CEP41 Rabbit Polyclonal Antibody
Description	Rabbit Polyclonal Antibody
Host	Rabbit
Application	IHC-P,IF-P,IF-F,ICC/IF,ELISA
Reactivity	Human,Rat,Mouse

Performance

Conjugation	Unconjugated
Modification	Unmodified
Isotype	IgG
Clonality	Polyclonal
Form	Liquid
Storage	Store at 4°C short term. Aliquot and store at -20°C long term. Avoid freeze/thaw cycles.
Buffer	Liquid in PBS containing 50% glycerol, 0.5% BSA and 0.02% New type preservative N.
Purification	Affinity purification

Immunogen

Gene Name	CEP41
Alternative Names	CEP41; TSGA14; Centrosomal protein of 41 kDa; Cep41; Testis-specific gene A14 protein
Gene ID	95681.0
SwissProt ID	Q9BYV8. The antiserum was produced against synthesized peptide derived from human CEP41. AA range:150-200

Application

Dilution Ratio	IHC-P 1:100-1:300, ELISA 1:40000, IF-P/IF-F/ICC/IF 1:50-200
Molecular Weight	41kDa

Background

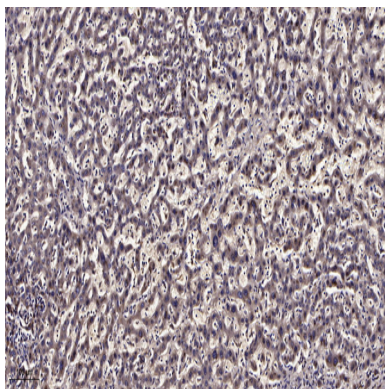
Product Name: CEP41 Rabbit Polyclonal Antibody
Catalog #: APRab08664



This gene encodes a centrosomal and microtubule-binding protein which is predicted to have two coiled-coil domains and a rhodanese domain. In human retinal pigment epithelial cells the protein localized to centrioles and cilia. Mutations in this gene have been associated with Joubert Syndrome 15; an autosomal recessive ciliopathy and neurological disorder. Alternative splicing results in multiple transcript variants. [provided by RefSeq, Mar 2012],similarity:Contains 1 rhodanese domain.,tissue specificity:Isoform 1 and isoform 4 are expressed in testis and fetal tissues.,

Research Area

Image Data



Immunohistochemical analysis of paraffin-embedded human liver cancer. 1, Antibody was diluted at 1:200 (4° overnight) .
2, Tris-EDTA,pH9.0 was used for antigen retrieval. 3,Secondary antibody was diluted at 1:200 (room temperature, 45min) .

Note

For research use only.