

Product Name: CEACAM21 Rabbit Polyclonal Antibody
Catalog #: APRab08616



Summary

Production Name	CEACAM21 Rabbit Polyclonal Antibody
Description	Rabbit Polyclonal Antibody
Host	Rabbit
Application	WB,ELISA
Reactivity	Human

Performance

Conjugation	Unconjugated
Modification	Unmodified
Isotype	IgG
Clonality	Polyclonal
Form	Liquid
Storage	Store at 4°C short term. Aliquot and store at -20°C long term. Avoid freeze/thaw cycles.
Buffer	Liquid in PBS containing 50% glycerol, 0.5% BSA and 0.02% New type preservative N.
Purification	Affinity purification

Immunogen

Gene Name	CEACAM21
Alternative Names	CEACAM21; Carcinoembryonic antigen-related cell adhesion molecule 21
Gene ID	90273.0
SwissProt ID	Q3KPI0. The antiserum was produced against synthesized peptide derived from human CEACAM21. AA range:171-220

Application

Dilution Ratio	WB 1:500-1:2000, ELISA 1:10000. Not yet tested in other applications.
Molecular Weight	32kDa

Background

similarity:Belongs to the immunoglobulin superfamily. CEA family.,similarity:Contains 1 Ig-like C2-type (immunoglobulin-

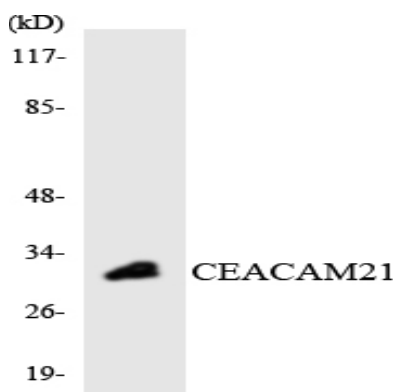
Product Name: CEACAM21 Rabbit Polyclonal Antibody
Catalog #: APRab08616



like) domain.,similarity:Belongs to the immunoglobulin superfamily. CEA family.,similarity:Contains 1 Ig-like C2-type (immunoglobulin-like) domain.,

Research Area

Image Data



Western blot analysis of the lysates from HT-29 cells using CEACAM21 antibody.

Note

For research use only.