

## Summary

<b>Production Name</b>	CDYL2 Rabbit Polyclonal Antibody
<b>Description</b>	Rabbit Polyclonal Antibody
<b>Host</b>	Rabbit
<b>Application</b>	WB,IHC-P,IF-P,IF-F,ICC/IF,ICC,ELISA
<b>Reactivity</b>	Human,Rat,Mouse

## Performance

<b>Conjugation</b>	Unconjugated
<b>Modification</b>	Unmodified
<b>Isotype</b>	IgG
<b>Clonality</b>	Polyclonal
<b>Form</b>	Liquid
<b>Storage</b>	Store at 4°C short term. Aliquot and store at -20°C long term. Avoid freeze/thaw cycles.
<b>Buffer</b>	Liquid in PBS containing 50% glycerol, 0.5% BSA and 0.02% New type preservative N.
<b>Purification</b>	Affinity purification

## Immunogen

<b>Gene Name</b>	CDYL2
<b>Alternative Names</b>	CDYL2; Chromodomain Y-like protein 2; CDY-like 2
<b>Gene ID</b>	124359.0
<b>SwissProt ID</b>	Q8N8U2.The antiserum was produced against synthesized peptide derived from human CDYL2. AA range:31-80

## Application

<b>Dilution Ratio</b>	WB 1:500-1:2000, IHC-P 1:100-1:300, ICC 1:200-1:1000, ELISA 1:20000, IF-P/IF-F/ICC/IF 1:50-200
<b>Molecular Weight</b>	56kDa

**Product Name: CDYL2 Rabbit Polyclonal Antibody**  
**Catalog #: APRab08600**

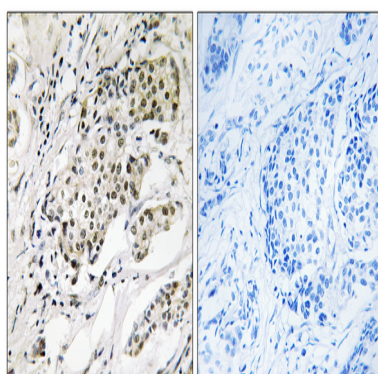


## Background

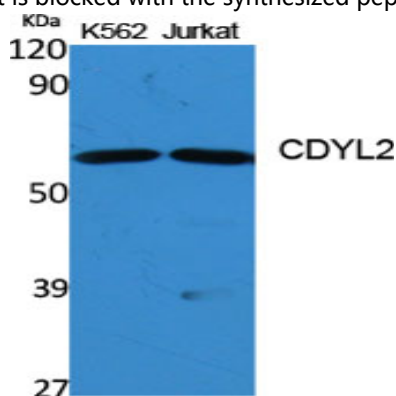
similarity:Contains 1 chromo domain.,tissue specificity:Ubiquitously expressed.,similarity:Contains 1 chromo domain.,tissue specificity:Ubiquitously expressed.,

## Research Area

## Image Data



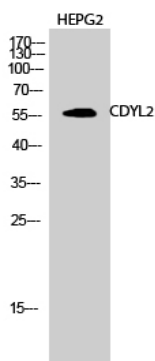
Immunohistochemistry analysis of paraffin-embedded human breast carcinoma, using CDYL2 Antibody. The picture on the right is blocked with the synthesized peptide.



Western Blot analysis of various cells using CDYL2 Polyclonal Antibody diluted at 1: 1000 cells nucleus extracted by Minute TM Cytoplasmic and Nuclear Fractionation kit (SC-003, Inventbiotech, MN, USA) .

**Product Name: CDYL2 Rabbit Polyclonal Antibody**  
**Catalog #: APRab08600**

---



Western Blot analysis of HEPG2 cells using CDYL2 Polyclonal Antibody diluted at 1: 1000 cells nucleus extracted by Minute  
TM Cytoplasmic and Nuclear Fractionation kit (SC-003, Inventbiotech, MN, USA) .

### **Note**

For research use only.