

**Product Name: Cdk11A/B Rabbit Polyclonal Antibody**  
**Catalog #: APRab08549**



## Summary

<b>Production Name</b>	Cdk11A/B Rabbit Polyclonal Antibody
<b>Description</b>	Rabbit Polyclonal Antibody
<b>Host</b>	Rabbit
<b>Application</b>	WB,ELISA
<b>Reactivity</b>	Human,Rat,Mouse

## Performance

<b>Conjugation</b>	Unconjugated
<b>Modification</b>	Unmodified
<b>Isotype</b>	IgG
<b>Clonality</b>	Polyclonal
<b>Form</b>	Liquid
<b>Storage</b>	Store at 4°C short term. Aliquot and store at -20°C long term. Avoid freeze/thaw cycles.
<b>Buffer</b>	Liquid in PBS containing 50% glycerol, 0.5% BSA and 0.02% New type preservative N.
<b>Purification</b>	Affinity purification

## Immunogen

<b>Gene Name</b>	CDK11A/CDK11B CDK11A; CDC2L2; CDC2L3; PITSLREB; Cyclin-dependent kinase 11A; Cell division cycle 2-like protein kinase 2; Cell division protein kinase 11A; Galactosyltransferase-associated protein kinase p58/GTA; PITSLRE serine/threonine-protein kinase C
<b>Alternative Names</b>	
<b>Gene ID</b>	728642/984
<b>SwissProt ID</b>	Q9UQ88/P21127. Synthesized peptide derived from Cdk11A/B . at AA range: 190-270

## Application

<b>Dilution Ratio</b>	WB 1:500-1:2000, ELISA 1:10000.Not yet tested in other applications.
<b>Molecular Weight</b>	90kDa

## Background

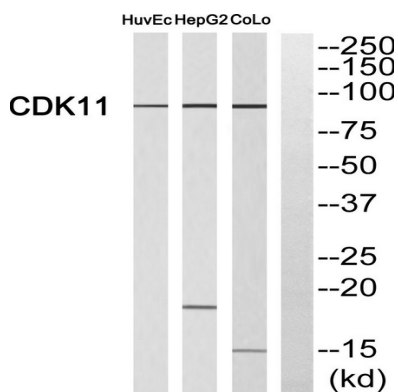
**Product Name: Cdk11A/B Rabbit Polyclonal Antibody**  
**Catalog #: APRab08549**



This gene encodes a member of the serine/threonine protein kinase family. Members of this kinase family are known to be essential for eukaryotic cell cycle control. Due to a segmental duplication, this gene shares very high sequence identity with a neighboring gene. These two genes are frequently deleted or altered in neuroblastoma. The protein kinase encoded by this gene can be cleaved by caspases and may play a role in cell apoptosis. Alternative splicing results in multiple transcript variants. [provided by RefSeq, Sep 2015],caution:The sequence shown here is derived from an Ensembl automatic analysis pipeline and should be considered as preliminary data.,

## Research Area

## Image Data



Western blot analysis of CDK11 Antibody. The lane on the right is blocked with the CDK11 peptide.

## Note

For research use only.