

**Product Name: CDHF10 Rabbit Polyclonal Antibody**  
**Catalog #: APRab08540**



## Summary

<b>Production Name</b>	CDHF10 Rabbit Polyclonal Antibody
<b>Description</b>	Rabbit Polyclonal Antibody
<b>Host</b>	Rabbit
<b>Application</b>	IHC-P,IF-P,IF-F,ICC/IF,ELISA
<b>Reactivity</b>	Human,Mouse,Rat

## Performance

<b>Conjugation</b>	Unconjugated
<b>Modification</b>	Unmodified
<b>Isotype</b>	IgG
<b>Clonality</b>	Polyclonal
<b>Form</b>	Liquid
<b>Storage</b>	Store at 4°C short term. Aliquot and store at -20°C long term. Avoid freeze/thaw cycles.
<b>Buffer</b>	Liquid in PBS containing 50% glycerol, 0.5% BSA and 0.02% New type preservative N.
<b>Purification</b>	Affinity purification

## Immunogen

<b>Gene Name</b>	CELSR2
<b>Alternative Names</b>	CELSR2; CDHF10; EGFL2; KIAA0279; MEGF3; Cadherin EGF LAG seven-pass G-type receptor 2; Cadherin family member 10; Epidermal growth factor-like protein 2; EGF-like protein 2; Flamingo homolog 3; Multiple epidermal growth factor-like domains
<b>Gene ID</b>	1952.0
<b>SwissProt ID</b>	Q9HCU4.The antiserum was produced against synthesized peptide derived from human CELSR2. AA range:2781-2830

## Application

<b>Dilution Ratio</b>	IHC-P 1:100-1:300, IF-P/IF-F/ICC/IF 1:200-1:1000, ELISA 1:5000.Not yet tested in other applications.
-----------------------	--

---

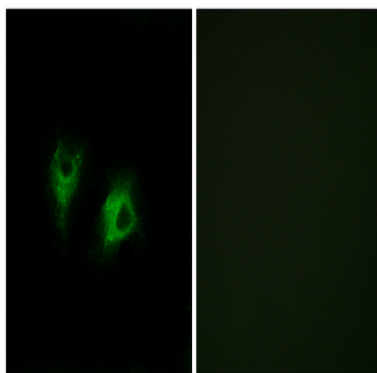
## Molecular Weight

## Background

The protein encoded by this gene is a member of the flamingo subfamily, part of the cadherin superfamily. The flamingo subfamily consists of nonclassic-type cadherins; a subpopulation that does not interact with catenins. The flamingo cadherins are located at the plasma membrane and have nine cadherin domains, seven epidermal growth factor-like repeats and two laminin A G-type repeats in their ectodomain. They also have seven transmembrane domains, a characteristic unique to this subfamily. It is postulated that these proteins are receptors involved in contact-mediated communication, with cadherin domains acting as homophilic binding regions and the EGF-like domains involved in cell adhesion and receptor-ligand interactions. The specific function of this particular member has not been determined. [provided by RefSeq, Jul 2008],function:Receptor that may have an important role in cell/cell signaling during nervous system formation.,PTM:The iron and 2-oxoglutarate dependent 3-hydroxylation of aspartate and asparagine is (R) stereospecific within EGF domains.,similarity:Belongs to the G-protein coupled receptor 2 family. LN-TM7 subfamily.,similarity:Contains 1 GPS domain.,similarity:Contains 1 laminin EGF-like domain.,similarity:Contains 2 laminin G-like domains.,similarity:Contains 7 EGF-like domains.,similarity:Contains 9 cadherin domains.,tissue specificity:Highest expression in brain and testis.,

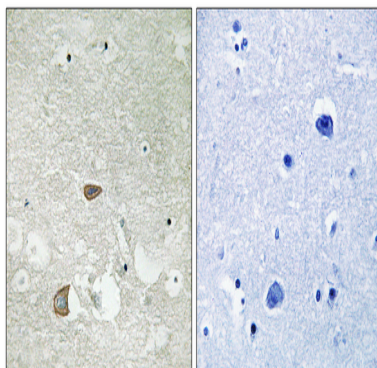
## Research Area

## Image Data



Immunofluorescence analysis of COS7 cells, using CELSR2 Antibody. The picture on the right is blocked with the synthesized peptide.

**Product Name: CDHF10 Rabbit Polyclonal Antibody**  
**Catalog #: APRab08540**



Immunohistochemistry analysis of paraffin-embedded human brain tissue, using CELSR2 Antibody. The picture on the right is blocked with the synthesized peptide.

### **Note**

For research use only.