

Product Name: Cdc50C Rabbit Polyclonal Antibody
Catalog #: APRab08526



Summary

Production Name	Cdc50C Rabbit Polyclonal Antibody
Description	Rabbit Polyclonal Antibody
Host	Rabbit
Application	IF-P,IF-F,ICC/IF,ELISA
Reactivity	Human,Rat,Mouse

Performance

Conjugation	Unconjugated
Modification	Unmodified
Isotype	IgG
Clonality	Polyclonal
Form	Liquid
Storage	Store at 4°C short term. Aliquot and store at -20°C long term. Avoid freeze/thaw cycles.
Buffer	Liquid in PBS containing 50% glycerol, 0.5% BSA and 0.02% New type preservative N.
Purification	Affinity purification

Immunogen

Gene Name	TMEM30C
Alternative Names	TMEM30C; CDC50C; Cell cycle control protein 50C; Transmembrane protein 30C
Gene ID	288175.0
SwissProt ID	A0ZSE6. The antiserum was produced against synthesized peptide derived from human TMEM30C. AA range:51-100

Application

Dilution Ratio	IF-P/IF-F/ICC/IF 1:200-1:1000, ELISA 1:20000. Not yet tested in other applications.
Molecular Weight	

Background

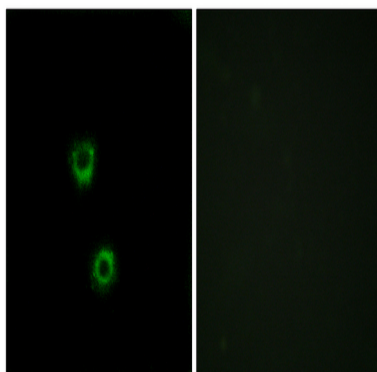
TMEM30C, also named as CDC50C, belongs to the CDC50/LEM3 family. TMEM30C is specifically expressed in testis.

Product Name: Cdc50C Rabbit Polyclonal Antibody
Catalog #: APRab08526



Research Area

Image Data



Immunofluorescence analysis of MCF7 cells, using TMEM30C Antibody. The picture on the right is blocked with the synthesized peptide.

Note

For research use only.