

Product Name: CDC46 Rabbit Polyclonal Antibody
Catalog #: APRab08524



Summary

Production Name	CDC46 Rabbit Polyclonal Antibody
Description	Rabbit Polyclonal Antibody
Host	Rabbit
Application	WB,IHC-P,IF-P,IF-F,ICC/IF,ELISA
Reactivity	Human,Mouse,Rat

Performance

Conjugation	Unconjugated
Modification	Unmodified
Isotype	IgG
Clonality	Polyclonal
Form	Liquid
Storage	Store at 4°C short term. Aliquot and store at -20°C long term. Avoid freeze/thaw cycles.
Buffer	Liquid in PBS containing 50% glycerol, 0.5% BSA and 0.02% New type preservative N.
Purification	Affinity purification

Immunogen

Gene Name	MCM5
Alternative Names	MCM5; CDC46; DNA replication licensing factor MCM5; CDC46 homolog; P1-CDC46
Gene ID	4174.0
SwissProt ID	P33992.The antiserum was produced against synthesized peptide derived from human MCM5. AA range:21-70

Application

Dilution Ratio	WB 1:500-1:2000, IHC-P 1:100-1:300, IF-P/IF-F/ICC/IF 1:200-1:1000, ELISA 1:20000.Not yet tested in other applications.
Molecular Weight	90kDa

Product Name: CDC46 Rabbit Polyclonal Antibody
Catalog #: APRab08524



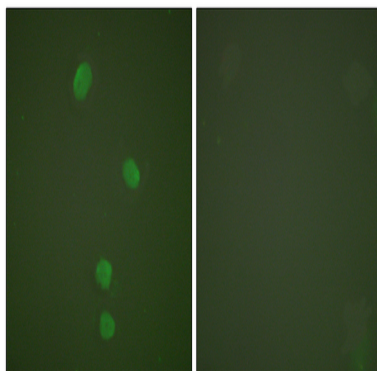
Background

The protein encoded by this gene is structurally very similar to the CDC46 protein from *S. cerevisiae*, a protein involved in the initiation of DNA replication. The encoded protein is a member of the MCM family of chromatin-binding proteins and can interact with at least two other members of this family. The encoded protein is upregulated in the transition from the G0 to G1/S phase of the cell cycle and may actively participate in cell cycle regulation. [provided by RefSeq, Jul 2008],similarity:Belongs to the MCM family.,similarity:Contains 1 MCM domain.,

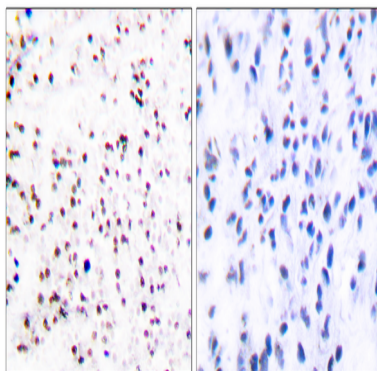
Research Area

DNA replication;Cell_Cycle_G1S;Cell_Cycle_G2M_DNA;

Image Data

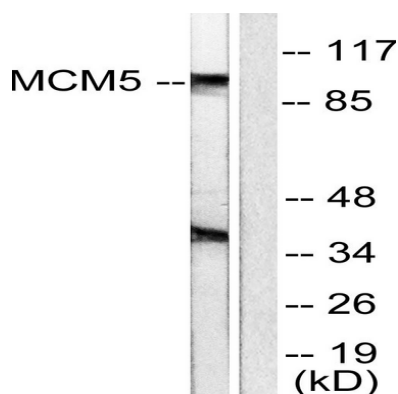


Immunofluorescence analysis of HepG2 cells, using MCM5 Antibody. The picture on the right is blocked with the synthesized peptide.

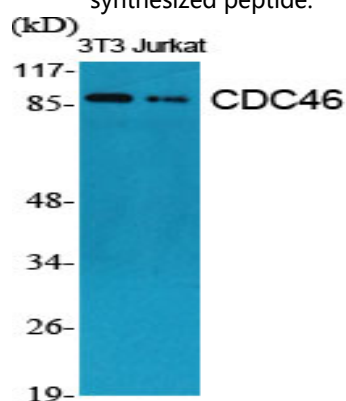


Immunohistochemistry analysis of paraffin-embedded human tonsil tissue, using MCM5 Antibody. The picture on the right is blocked with the synthesized peptide.

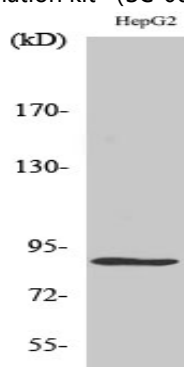
Product Name: CDC46 Rabbit Polyclonal Antibody
Catalog #: APRab08524



Western blot analysis of lysates from HepG2 cells, using MCM5 Antibody. The lane on the right is blocked with the synthesized peptide.



Western Blot analysis of various cells using CDC46 Polyclonal Antibody cells nucleus extracted by Minute TM Cytoplasmic and Nuclear Fractionation kit (SC-003, Inventbiotech, MN, USA) .



Western Blot analysis of HepG2 cells using CDC46 Polyclonal Antibody cells nucleus extracted by Minute TM Cytoplasmic and Nuclear Fractionation kit (SC-003, Inventbiotech, MN, USA) .

Note

For research use only.