

Product Name: Cdc25B Rabbit Polyclonal Antibody
Catalog #: APRab08505



Summary

Production Name	Cdc25B Rabbit Polyclonal Antibody
Description	Rabbit Polyclonal Antibody
Host	Rabbit
Application	WB,IHC-P,IF-P,IF-F,ICC/IF,ELISA
Reactivity	Human,Rat,Mouse

Performance

Conjugation	Unconjugated
Modification	Unmodified
Isotype	IgG
Clonality	Polyclonal
Form	Liquid
Storage	Store at 4°C short term. Aliquot and store at -20°C long term. Avoid freeze/thaw cycles.
Buffer	Liquid in PBS containing 50% glycerol, 0.5% BSA and 0.02% New type preservative N.
Purification	Affinity purification

Immunogen

Gene Name	CDC25B
Alternative Names	CDC25B; CDC25HU2; M-phase inducer phosphatase 2; Dual specificity phosphatase Cdc25B
Gene ID	994.0
SwissProt ID	P30305.The antiserum was produced against synthesized peptide derived from human CDC25B. AA range:319-368

Application

Dilution Ratio	WB 1:500-1:2000, IHC-P 1:100-1:300, IF-P/IF-F/ICC/IF 1:200-1:1000, ELISA 1:5000.Not yet tested in other applications.
Molecular Weight	64kDa

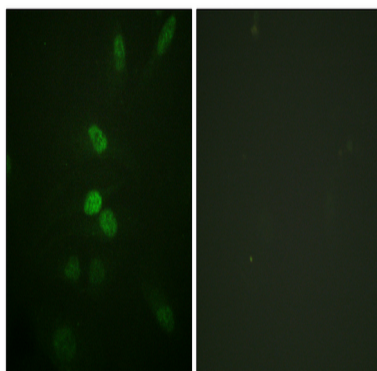
Background

cell division cycle 25B(CDC25B) Homo sapiens CDC25B is a member of the CDC25 family of phosphatases. CDC25B activates the cyclin dependent kinase CDC2 by removing two phosphate groups and it is required for entry into mitosis. CDC25B shuttles between the nucleus and the cytoplasm due to nuclear localization and nuclear export signals. The protein is nuclear in the M and G1 phases of the cell cycle and moves to the cytoplasm during S and G2. CDC25B has oncogenic properties, although its role in tumor formation has not been determined. Multiple transcript variants for this gene exist. [provided by RefSeq, Jul 2008],catalytic activity:Protein tyrosine phosphate + H(2)O = protein tyrosine + phosphate,enzyme regulation:Stimulated by B-type cyclins,function:Tyrosine protein phosphatase which functions as a dosage-dependent inducer of mitotic progression. Directly dephosphorylates CDC2 and stimulates its kinase activity. The three isoforms seem to have a different level of activity,PTM:Phosphorylated by BRSK1 in vitro. Phosphorylated by CHEK1, which inhibits the activity of this protein,.,similarity:Belongs to the MPI phosphatase family,.,similarity:Contains 1 rhodanese domain.,

Research Area

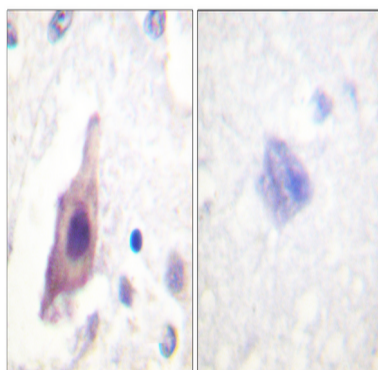
MAPK_ERK_Growth;MAPK_G_Protein;Cell_Cycle_G1S;Cell_Cycle_G2M_DNA;Progesterone-mediated oocyte maturation;

Image Data

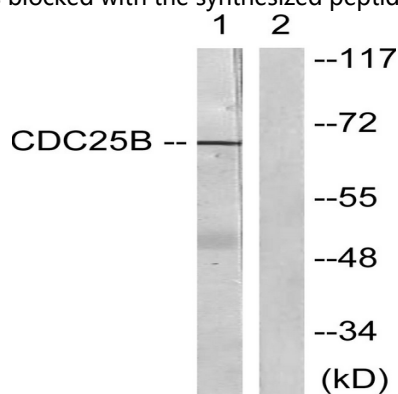


Immunofluorescence analysis of HeLa cells, using CDC25B Antibody. The picture on the right is blocked with the synthesized peptide.

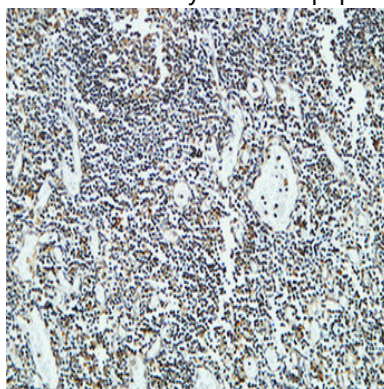
Product Name: Cdc25B Rabbit Polyclonal Antibody
Catalog #: APRab08505



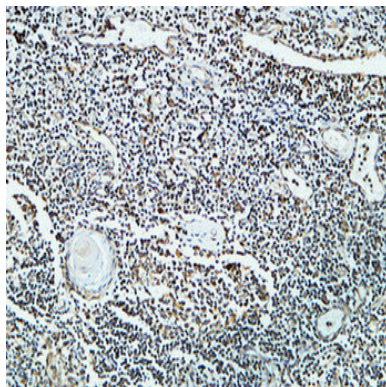
Immunohistochemistry analysis of paraffin-embedded human brain tissue, using CDC25B Antibody. The picture on the right is blocked with the synthesized peptide.



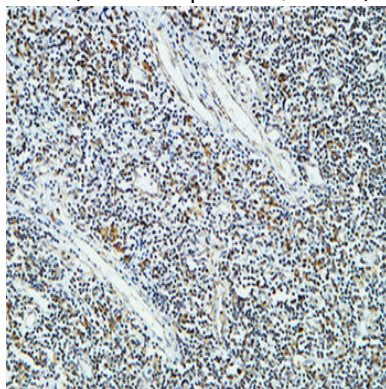
Western blot analysis of lysates from Raw264.7 cells, treated with UV 15', using CDC25B Antibody. The lane on the right is blocked with the synthesized peptide.



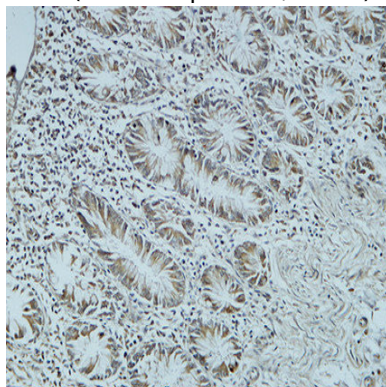
Immunohistochemical analysis of paraffin-embedded Human Amygdala. 1, Antibody was diluted at 1:200 (4°,overnight) . 2, High-pressure and temperature EDTA, pH8.0 was used for antigen retrieval. 3,Secondary antibody was diluted at 1:200 (room temperature, 30min) .



Immunohistochemical analysis of paraffin-embedded Human Amygdala. 1, Antibody was diluted at 1:200 (4°,overnight) . 2, High-pressure and temperature EDTA, pH8.0 was used for antigen retrieval. 3,Secondary antibody was diluted at 1:200 (room temperature, 30min) .

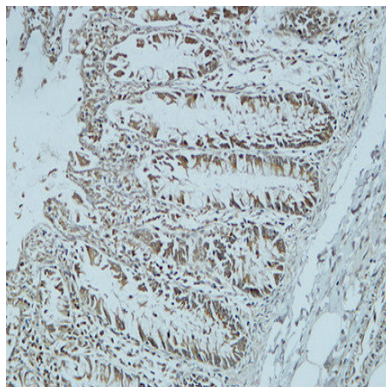


Immunohistochemical analysis of paraffin-embedded Human Amygdala. 1, Antibody was diluted at 1:200 (4°,overnight) . 2, High-pressure and temperature EDTA, pH8.0 was used for antigen retrieval. 3,Secondary antibody was diluted at 1:200 (room temperature, 30min) .

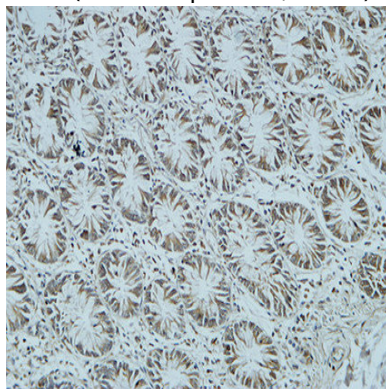


Immunohistochemical analysis of paraffin-embedded Human colon. 1, Antibody was diluted at 1:400 (4°,overnight) . 2, High-pressure and temperature EDTA, pH8.0 was used for antigen retrieval. 3,Secondary antibody was diluted at 1:200 (room temperature, 30min) .

Product Name: Cdc25B Rabbit Polyclonal Antibody
Catalog #: APRab08505



Immunohistochemical analysis of paraffin-embedded Human colon. 1, Antibody was diluted at 1:400 (4°,overnight) . 2, High-pressure and temperature EDTA, pH8.0 was used for antigen retrieval. 3,Secondary antibody was diluted at 1:200 (room temperature, 30min) .



Immunohistochemical analysis of paraffin-embedded Human colon. 1, Antibody was diluted at 1:400 (4°,overnight) . 2, High-pressure and temperature EDTA, pH8.0 was used for antigen retrieval. 3,Secondary antibody was diluted at 1:200 (room temperature, 30min) .

Note

For research use only.