

Product Name: CD32-B/C Rabbit Polyclonal Antibody
Catalog #: APRab08368



Summary

Production Name	CD32-B/C Rabbit Polyclonal Antibody
Description	Rabbit Polyclonal Antibody
Host	Rabbit
Application	WB,ELISA
Reactivity	Human,Rat,Mouse

Performance

Conjugation	Unconjugated
Modification	Unmodified
Isotype	IgG
Clonality	Polyclonal
Form	Liquid
Storage	Store at 4°C short term. Aliquot and store at -20°C long term. Avoid freeze/thaw cycles.
Buffer	Liquid in PBS containing 50% glycerol, 0.5% BSA and 0.02% New type preservative N.
Purification	Affinity purification

Immunogen

Gene Name	FCGR2B/FCGR2C FCGR2B; CD32; FCG2; IGFR2; Low affinity immunoglobulin gamma Fc region receptor II-b; IgG Fc receptor II-b; CDw32; Fc-gamma RII-b; Fc-gamma-RIIb; FcRII-b; CD32;
Alternative Names	FCGR2C; CD32; FCG2; IGFR2;Low affinity immunoglobulin gamma Fc region receptor II-c; IgG Fc receptor II-c; CDw32; Fc-gamma RII-c; Fc-gamma-RIIc; FcRII-c; CD32
Gene ID	2213.0
SwissProt ID	P31994. The antiserum was produced against synthesized peptide derived from the Internal region of human FCGR2B/C. AA range:141-190

Application

Dilution Ratio	WB 1:500-1:2000, ELISA 1:20000.Not yet tested in other applications.
Molecular Weight	35kDa

Product Name: CD32-B/C Rabbit Polyclonal Antibody
Catalog #: APRab08368



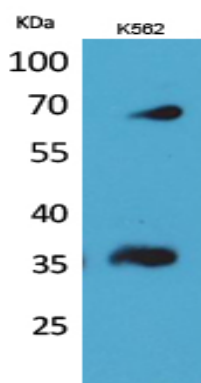
Background

Low affinity immunoglobulin gamma Fc region receptor II-b/Low affinity immunoglobulin gamma Fc region receptor II-c encoded by FCGR2B is a low affinity receptor for the Fc region of immunoglobulin gamma complexes. The encoded protein is involved in the phagocytosis of immune complexes and in the regulation of antibody production by B-cells. Variations in this gene may increase susceptibility to systemic lupus erythematosus (SLE). Several transcript variants encoding different isoforms have been found for this gene. immune response,

Research Area

B_Cell_Antigen;Fc gamma R-mediated phagocytosis;Systemic lupus erythematosus;

Image Data



Western Blot analysis of K562 cells using CD32-B/C Polyclonal Antibody.. Secondary antibody was diluted at 1:20000

Note

For research use only.