

**Product Name: CD303 Rabbit Polyclonal Antibody**  
**Catalog #: APRab08346**



## Summary

<b>Production Name</b>	CD303 Rabbit Polyclonal Antibody
<b>Description</b>	Rabbit Polyclonal Antibody
<b>Host</b>	Rabbit
<b>Application</b>	IHC-P,IF-P,IF-F,ICC/IF,ELISA
<b>Reactivity</b>	Human,Rat,Mouse

## Performance

<b>Conjugation</b>	Unconjugated
<b>Modification</b>	Unmodified
<b>Isotype</b>	IgG
<b>Clonality</b>	Polyclonal
<b>Form</b>	Liquid
<b>Storage</b>	Store at 4°C short term. Aliquot and store at -20°C long term. Avoid freeze/thaw cycles.
<b>Buffer</b>	Liquid in PBS containing 50% glycerol, 0.5% BSA and 0.02% New type preservative N.
<b>Purification</b>	Affinity purification

## Immunogen

<b>Gene Name</b>	CLEC4C BDCA2 CLECSF11 CLECSF7 DLEC HECL UNQ9361/PRO34150
<b>Alternative Names</b>	C-type lectin domain family 4 member C (Blood dendritic cell antigen 2;BDCA-2;C-type lectin superfamily member 7;Dendritic lectin;CD antigen CD303)
<b>Gene ID</b>	170482.0
<b>SwissProt ID</b>	Q8WTT0.Synthetic peptide from human protein at AA range: 91-140

## Application

<b>Dilution Ratio</b>	IHC-P 1:50-200, ELISA 1:10000-20000, IF-P/IF-F/ICC/IF 1:50-200
<b>Molecular Weight</b>	

## Background

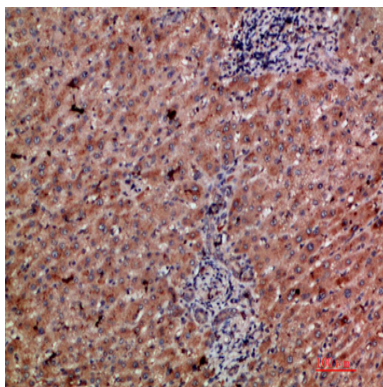
**Product Name: CD303 Rabbit Polyclonal Antibody**  
**Catalog #: APRab08346**



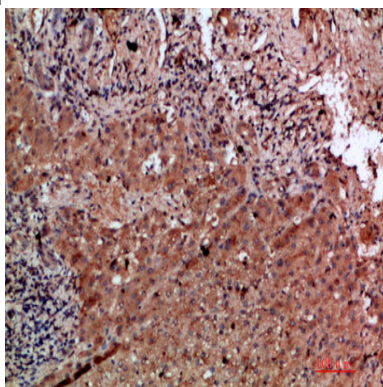
This gene encodes a member of the C-type lectin/C-type lectin-like domain (CTL/CTLD) superfamily. Members of this family share a common protein fold and have diverse functions, such as cell adhesion, cell-cell signalling, glycoprotein turnover, and roles in inflammation and immune response. The encoded type 2 transmembrane protein may play a role in dendritic cell function. Two transcript variants encoding distinct isoforms have been identified for this gene. [provided by RefSeq, Jul 2008],function:Involved in antigen-capturing. Target ligand into antigen processing and peptide-loading compartments for presentation to T-cells. May mediate potent inhibition of induction of IFN-alpha/beta expression in plasmacytoid dendritic cells. May act as a signaling receptor that activates protein-tyrosine kinases and mobilizes intracellular calcium. Does not seem to bind mannose.,online information:BDCA-2,similarity:Contains 1 C-type lectin domain.,tissue specificity:Expressed in plasmacytoid dendritic cells (PDCs). Constitutively expressed in immature monocyte-derived dendritic cells (iMDDC) and is significantly down-regulated upon maturation with LPS but not with TNF-alpha.,

## Research Area

## Image Data



Immunohistochemical analysis of paraffin-embedded human-liver-cancer, antibody was diluted at 1:200



Immunohistochemical analysis of paraffin-embedded human-liver-cancer, antibody was diluted at 1:200

**Product Name: CD303 Rabbit Polyclonal Antibody**  
**Catalog #: APRab08346**



---

**Note**

For research use only.