

## Summary

<b>Production Name</b>	CD269 Rabbit Polyclonal Antibody
<b>Description</b>	Rabbit Polyclonal Antibody
<b>Host</b>	Rabbit
<b>Application</b>	WB,ELISA
<b>Reactivity</b>	Human,Rat,Mouse

## Performance

<b>Conjugation</b>	Unconjugated
<b>Modification</b>	Unmodified
<b>Isotype</b>	IgG
<b>Clonality</b>	Polyclonal
<b>Form</b>	Liquid
<b>Storage</b>	Store at 4°C short term. Aliquot and store at -20°C long term. Avoid freeze/thaw cycles.
<b>Buffer</b>	Liquid in PBS containing 50% glycerol, 0.5% BSA and 0.02% New type preservative N.
<b>Purification</b>	Affinity purification

## Immunogen

<b>Gene Name</b>	TNFRSF17
<b>Alternative Names</b>	TNFRSF17; BCM; BCMA; Tumor necrosis factor receptor superfamily member 17; B-cell maturation protein; CD269
<b>Gene ID</b>	608.0
<b>SwissProt ID</b>	Q02223.Synthesized peptide derived from the Internal region of human CD269.

## Application

<b>Dilution Ratio</b>	WB 1:500-1:2000, ELISA 1:10000.Not yet tested in other applications.
<b>Molecular Weight</b>	20kDa

## Background

**Product Name: CD269 Rabbit Polyclonal Antibody**  
**Catalog #: AP Rab08315**

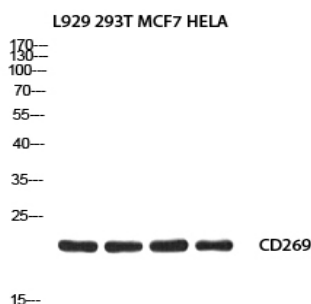


The protein encoded by this gene is a member of the TNF-receptor superfamily. This receptor is preferentially expressed in mature B lymphocytes, and may be important for B cell development and autoimmune response. This receptor has been shown to specifically bind to the tumor necrosis factor (ligand) superfamily, member 13b (TNFSF13B/TALL-1/BAFF), and to lead to NF-kappaB and MAPK8/JNK activation. This receptor also binds to various TRAF family members, and thus may transduce signals for cell survival and proliferation. [provided by RefSeq, Jul 2008], disease: A chromosomal aberration involving TNFRSF17 is found in a form of T-cell acute lymphoblastic leukemia (T-ALL). Translocation t(4;16)(q26;p13) with IL2., function: Receptor for TNFSF13B/BLyS/BAFF and TNFSF13/APRIL. Promotes B-cell survival and plays a role in the regulation of humoral immunity. Activates NF-kappa-B and JNK., similarity: Contains 1 TNFR-Cys repeat., subcellular location: Perinuclear Golgi-like structures., subunit: Associates with TRAF1, TRAF2, TRAF3, TRAF5 and TRAF6., tissue specificity: Expressed in mature B-cells, but not in T-cells or monocytes.,

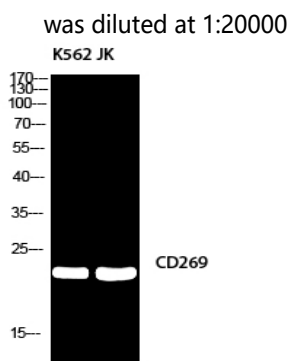
## Research Area

Cytokine-cytokine receptor interaction; Intestinal immune network for IgA production;

## Image Data



Western blot analysis of L929 293T MCF7 HELA using CD269 antibody. Antibody was diluted at 1:2000. Secondary antibody



Western blot analysis of K562/JK using CD269 antibody. Antibody was diluted at 1:2000. Secondary antibody was diluted at 1:20000

**Product Name: CD269 Rabbit Polyclonal Antibody**  
**Catalog #: APRab08315**

---



**Note**

For research use only.