

Product Name: CD229 Rabbit Polyclonal Antibody
Catalog #: APRab08291



Summary

Production Name	CD229 Rabbit Polyclonal Antibody
Description	Rabbit Polyclonal Antibody
Host	Rabbit
Application	WB,IHC-P,IF-P,IF-F,ICC/IF,ELISA
Reactivity	Human,Rat,Mouse

Performance

Conjugation	Unconjugated
Modification	Unmodified
Isotype	IgG
Clonality	Polyclonal
Form	Liquid
Storage	Store at 4°C short term. Aliquot and store at -20°C long term. Avoid freeze/thaw cycles.
Buffer	Liquid in PBS containing 50% glycerol, 0.5% BSA and 0.02% New type preservative N.
Purification	Affinity purification

Immunogen

Gene Name	LY9
Alternative Names	LY9; CDABP0070; T-lymphocyte surface antigen Ly-9; Cell surface molecule Ly-9; Lymphocyte antigen 9; CD229
Gene ID	4063.0
SwissProt ID	Q9HBG7.The antiserum was produced against synthesized peptide derived from the Internal region of human LY9. AA range:261-310

Application

Dilution Ratio	WB 1:500-1:2000, IHC-P 1:100-300, ELISA 1:20000, IF-P/IF-F/ICC/IF 1:50-200
Molecular Weight	72kDa

Product Name: CD229 Rabbit Polyclonal Antibody
Catalog #: APRab08291

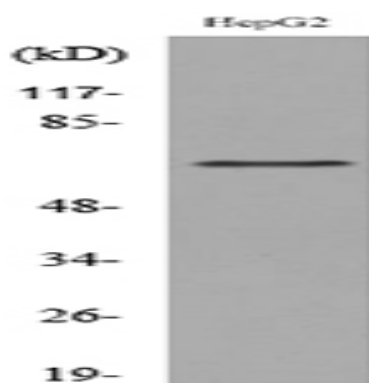


Background

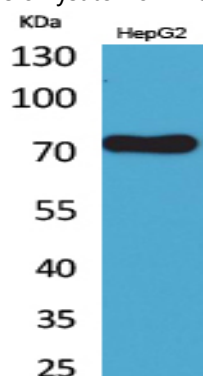
LY9 belongs to the SLAM family of immunomodulatory receptors (see SLAMF1; MIM 603492) and interacts with the adaptor molecule SAP (SH2D1A; MIM 300490) (Graham et al., 2006 [PubMed 16365421]).[supplied by OMIM, Mar 2008],alternative products:Experimental confirmation may be lacking for some isoforms,function:May participate in adhesion reactions between T lymphocytes and accessory cells by homophilic interaction.,similarity:Contains 2 Ig-like C2-type (immunoglobulin-like) domains.,similarity:Contains 2 Ig-like V-type (immunoglobulin-like) domains.,

Research Area

Image Data

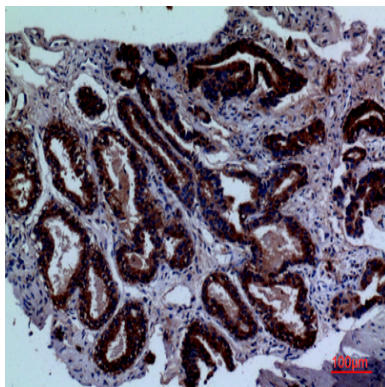


Western blot analysis of lysate from HepG2 cells, using LY9 Antibody.



Western Blot analysis of HepG2 cells using CD229 Polyclonal Antibody.. Secondary antibody was diluted at 1:20000

Product Name: CD229 Rabbit Polyclonal Antibody
Catalog #: APRab08291



Immunohistochemical analysis of paraffin-embedded human-prostate-cancer, antibody was diluted at 1:100

Note

For research use only.