

**Product Name: CD223 Rabbit Polyclonal Antibody**  
**Catalog #: APRab08287**



## Summary

<b>Production Name</b>	CD223 Rabbit Polyclonal Antibody
<b>Description</b>	Rabbit Polyclonal Antibody
<b>Host</b>	Rabbit
<b>Application</b>	WB,ELISA
<b>Reactivity</b>	Human,Rat,Mouse

## Performance

<b>Conjugation</b>	Unconjugated
<b>Modification</b>	Unmodified
<b>Isotype</b>	IgG
<b>Clonality</b>	Polyclonal
<b>Form</b>	Liquid
<b>Storage</b>	Store at 4°C short term. Aliquot and store at -20°C long term. Avoid freeze/thaw cycles.
<b>Buffer</b>	Liquid in PBS containing 50% glycerol, 0.5% BSA and 0.02% New type preservative N.
<b>Purification</b>	Affinity purification

## Immunogen

<b>Gene Name</b>	LAG3
<b>Alternative Names</b>	LAG3; FDC; Lymphocyte activation gene 3 protein; LAG-3; Protein FDC; CD223
<b>Gene ID</b>	3902.0
<b>SwissProt ID</b>	P18627. The antiserum was produced against synthesized peptide derived from the Internal region of human LAG3. AA range:91-140

## Application

<b>Dilution Ratio</b>	WB 1:500-1:2000, ELISA 1:20000. Not yet tested in other applications.
<b>Molecular Weight</b>	57kDa

## Background

Lymphocyte-activation protein 3 belongs to Ig superfamily and contains 4 extracellular Ig-like domains. The LAG3 gene

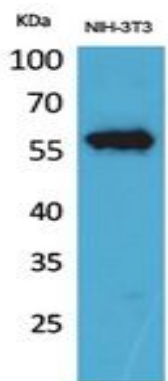
**Product Name: CD223 Rabbit Polyclonal Antibody**  
**Catalog #: APRab08287**



contains 8 exons. The sequence data, exon/intron organization, and chromosomal localization all indicate a close relationship of LAG3 to CD4. [provided by RefSeq, Jul 2008],function:Involved in lymphocyte activation. Binds to HLA class-II antigens.,similarity:Contains 1 Ig-like V-type (immunoglobulin-like) domain.,similarity:Contains 3 Ig-like C2-type (immunoglobulin-like) domains.,tissue specificity:On cell surface of activated NK and T-lymphocytes.,

## Research Area

## Image Data



Western Blot analysis of NIH-3T3 cells using CD223 Polyclonal Antibody.. Secondary antibody was diluted at 1:20000

## Note

For research use only.