

**Product Name: CD19 Rabbit Polyclonal Antibody**  
**Catalog #: APRab08256**



## Summary

<b>Production Name</b>	CD19 Rabbit Polyclonal Antibody
<b>Description</b>	Rabbit Polyclonal Antibody
<b>Host</b>	Rabbit
<b>Application</b>	WB,FC,IHC-P,IF-P,IF-F,ICC/IF,ELISA
<b>Reactivity</b>	Human,Rat,Mouse

## Performance

<b>Conjugation</b>	Unconjugated
<b>Modification</b>	Unmodified
<b>Isotype</b>	IgG
<b>Clonality</b>	Polyclonal
<b>Form</b>	Liquid
<b>Storage</b>	Store at 4°C short term. Aliquot and store at -20°C long term. Avoid freeze/thaw cycles.
<b>Buffer</b>	Liquid in PBS containing 50% glycerol, 0.5% BSA and 0.02% New type preservative N.
<b>Purification</b>	Affinity purification

## Immunogen

<b>Gene Name</b>	CD19
<b>Alternative Names</b>	CD19; B-lymphocyte antigen CD19; B-lymphocyte surface antigen B4; Differentiation antigen CD19; T-cell surface antigen Leu-12; CD19
<b>Gene ID</b>	930.0
<b>SwissProt ID</b>	P15391.Synthesized peptide derived from B-lymphocyte antigen CD19 at AA range: 191-240

## Application

<b>Dilution Ratio</b>	WB 1:500-2000, Flow Cyt 1:50-200, IHC-P 1:100-500, IF-P/IF-F/ICC/IF(paraffin section), ELISA 1:5000-20000
<b>Molecular Weight</b>	61kDa

**Product Name: CD19 Rabbit Polyclonal Antibody**  
**Catalog #: APRab08256**



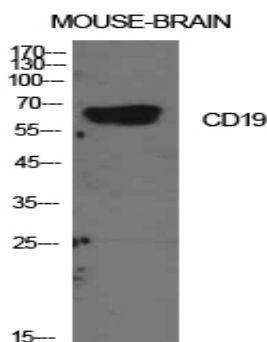
## Background

Lymphocytes proliferate and differentiate in response to various concentrations of different antigens. The ability of the B cell to respond in a specific, yet sensitive manner to the various antigens is achieved with the use of low-affinity antigen receptors. This gene encodes a cell surface molecule which assembles with the antigen receptor of B lymphocytes in order to decrease the threshold for antigen receptor-dependent stimulation. [provided by RefSeq, Jul 2008],disease:Defects in CD19 are a cause of hypogammaglobulinemia [MIM:107265],function:Assembles with the antigen receptor of B lymphocytes in order to decrease the threshold for antigen receptor-dependent stimulation.,online information:CD19 mutation db,PTM:Phosphorylated on serine and threonine upon DNA damage, probably by ATM or ATR. Phosphorylated on tyrosine following B-cell activation.,similarity:Contains 2 Ig-like C2-type (immunoglobulin-like) domains.,subunit:Forms a complex with CD21, CD81 and CD225 in the membrane of mature B cells. Interacts with VAV. Interacts with GRB2 and SOS when phosphorylated on Tyr-348 and/or Tyr-378. Interacts with PLCG2 when phosphorylated on Tyr-409.,

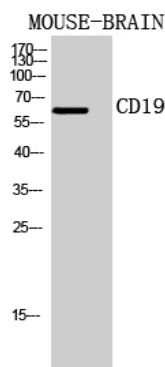
## Research Area

Hematopoietic cell lineage;B\_Cell\_Antigen;Primary immunodeficiency;

## Image Data



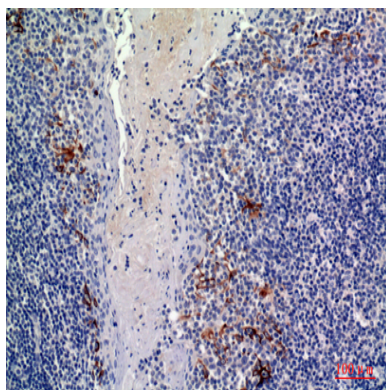
Western Blot analysis of mouse brain cells using CD19 Polyclonal Antibody. Antibody was diluted at 1:2000. Secondary antibody was diluted at 1:20000



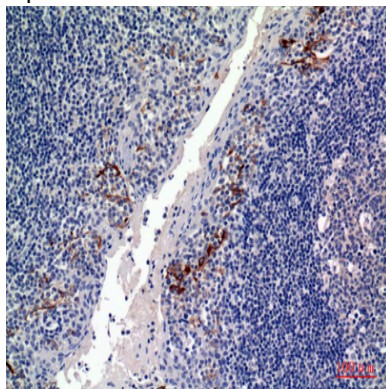
**Product Name: CD19 Rabbit Polyclonal Antibody**  
**Catalog #: APRab08256**



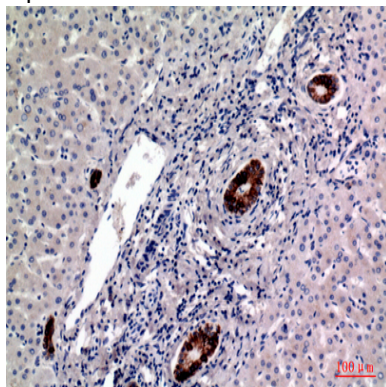
Western Blot analysis of MOUSE-BRAIN cells using CD19 Polyclonal Antibody diluted at 1: 2000. Secondary antibody was diluted at 1:20000



Immunohistochemical analysis of paraffin-embedded human-tonsils, antibody was diluted at 1:100

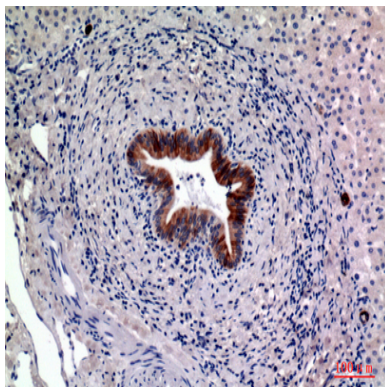


Immunohistochemical analysis of paraffin-embedded human-tonsils, antibody was diluted at 1:100

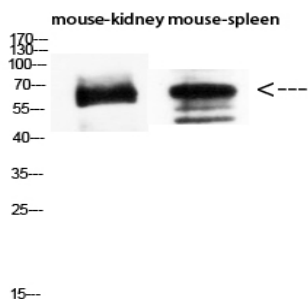


Immunohistochemical analysis of paraffin-embedded human-liver, antibody was diluted at 1:100

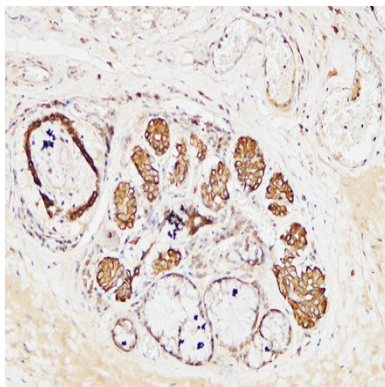
**Product Name: CD19 Rabbit Polyclonal Antibody**  
**Catalog #: APRab08256**



Immunohistochemical analysis of paraffin-embedded human-liver, antibody was diluted at 1:100



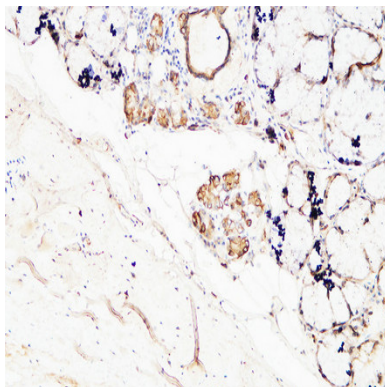
Western Blot analysis of mouse-kidney mouse-spleen using CD19 Polyclonal Antibody diluted at 1:1500. Secondary antibody was diluted at 1:20000



Immunohistochemical analysis of paraffin-embedded Human Amygdala. 1, Antibody was diluted at 1:200 (4°,overnight) . 2, High-pressure and temperature EDTA, pH8.0 was used for antigen retrieval. 3,Secondary antibody was diluted at 1:200 (room temperature, 30min) .

**Product Name: CD19 Rabbit Polyclonal Antibody**  
**Catalog #: APRab08256**

---



Immunohistochemical analysis of paraffin-embedded Human Amygdala. 1, Antibody was diluted at 1:200 (4°,overnight) . 2, High-pressure and temperature EDTA, pH8.0 was used for antigen retrieval. 3,Secondary antibody was diluted at 1:200 (room temperature, 30min) .

#### **Note**

For research use only.