

**Product Name: CD172g Rabbit Polyclonal Antibody**  
**Catalog #: APRab08250**



## Summary

<b>Production Name</b>	CD172g Rabbit Polyclonal Antibody
<b>Description</b>	Rabbit Polyclonal Antibody
<b>Host</b>	Rabbit
<b>Application</b>	WB,ELISA
<b>Reactivity</b>	Human,Monkey

## Performance

<b>Conjugation</b>	Unconjugated
<b>Modification</b>	Unmodified
<b>Isotype</b>	IgG
<b>Clonality</b>	Polyclonal
<b>Form</b>	Liquid
<b>Storage</b>	Store at 4°C short term. Aliquot and store at -20°C long term. Avoid freeze/thaw cycles.
<b>Buffer</b>	Liquid in PBS containing 50% glycerol, 0.5% BSA and 0.02% New type preservative N.
<b>Purification</b>	Affinity purification

## Immunogen

<b>Gene Name</b>	SIRPG
<b>Alternative Names</b>	SIRPG; SIRPB2; Signal-regulatory protein gamma; SIRP-gamma; CD172 antigen-like family member B; Signal-regulatory protein beta-2; SIRP-b2; SIRP-beta-2; CD antigen CD172g
<b>Gene ID</b>	55423.0
<b>SwissProt ID</b>	Q9P1W8.The antiserum was produced against synthesized peptide derived from human SIRPG. AA range:101-150

## Application

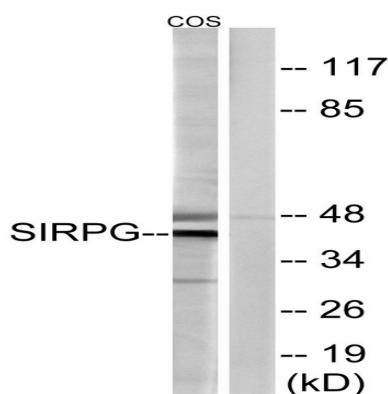
<b>Dilution Ratio</b>	WB 1:500-1:2000, ELISA 1:10000.Not yet tested in other applications.
<b>Molecular Weight</b>	42kDa

## Background

The protein encoded by this gene is a member of the signal-regulatory protein (SIRP) family, and also belongs to the immunoglobulin superfamily. SIRP family members are receptor-type transmembrane glycoproteins known to be involved in the negative regulation of receptor tyrosine kinase-coupled signaling processes. Alternatively spliced transcript variants encoding different isoforms have been described. [provided by RefSeq, Jul 2008],function:Probable immunoglobulin-like cell surface receptor. On binding with CD47, mediates cell-cell adhesion. Engagement on T-cells by CD47 on antigen-presenting cells results in enhanced antigen-specific T-cell proliferation and costimulates T-cell activation.,similarity:Contains 1 Ig-like V-type (immunoglobulin-like) domain.,similarity:Contains 2 Ig-like C1-type (immunoglobulin-like) domains.,subunit:Interacts with CD47.,tissue specificity:Detected in liver, and at very low levels in brain, heart, lung, pancreas, kidney, placenta and skeletal muscle. Expressed on CD4+ T-cells, CD8+ T-cells, CD56-bright natural killer (NK) cells, CD20+ cells, and all activated NK cells. Mainly present in the paracortical T-cell area of lymph nodes, with only sparse positive cells in the mantle and in the germinal center of B-cell follicles. In the thymus, primarily expressed in the medulla on mature T lymphocytes that have undergone thymic selection.,

## Research Area

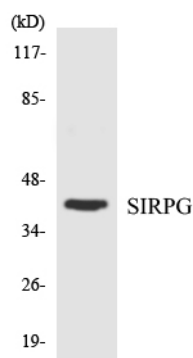
## Image Data



Western blot analysis of lysates from COS cells, using SIRPG Antibody. The lane on the right is blocked with the synthesized peptide.

**Product Name: CD172g Rabbit Polyclonal Antibody**  
**Catalog #: APRab08250**

---



Western blot analysis of the lysates from RAW264.7 cells using SIRPG antibody.

### **Note**

For research use only.