

**Product Name: CD163b Rabbit Polyclonal Antibody**  
**Catalog #: APRab08241**



## Summary

<b>Production Name</b>	CD163b Rabbit Polyclonal Antibody
<b>Description</b>	Rabbit Polyclonal Antibody
<b>Host</b>	Rabbit
<b>Application</b>	WB,IHC-P,IF-P,IF-F,ICC/IF,ELISA
<b>Reactivity</b>	Human,Rat,Mouse

## Performance

<b>Conjugation</b>	Unconjugated
<b>Modification</b>	Unmodified
<b>Isotype</b>	IgG
<b>Clonality</b>	Polyclonal
<b>Form</b>	Liquid
<b>Storage</b>	Store at 4°C short term. Aliquot and store at -20°C long term. Avoid freeze/thaw cycles.
<b>Buffer</b>	Liquid in PBS containing 50% glycerol, 0.5% BSA and 0.02% New type preservative N.
<b>Purification</b>	Affinity purification

## Immunogen

<b>Gene Name</b>	CD163L1
<b>Alternative Names</b>	CD163L1; CD163B; M160; Scavenger receptor cysteine-rich type 1 protein M160; CD163 antigen-like 1; CD163b
<b>Gene ID</b>	283316.0
<b>SwissProt ID</b>	Q9NR16.The antiserum was produced against synthesized peptide derived from the Internal region of human CD163L1. AA range:391-440

## Application

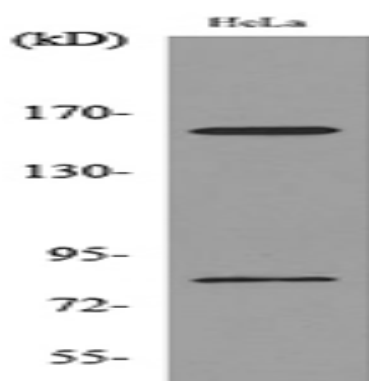
<b>Dilution Ratio</b>	WB 1:500-1:2000, IHC-P 1:100-1:300, ELISA 1:20000, IF-P/IF-F/ICC/IF 1:50-200
<b>Molecular Weight</b>	160kDa

## Background

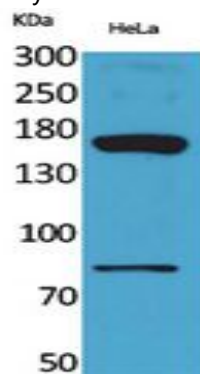
This gene encodes a member of the scavenger receptor cysteine-rich (SRCR) superfamily. Members of this family are secreted or membrane-anchored proteins mainly found in cells associated with the immune system. The SRCR family is defined by a 100-110 amino acid SRCR domain, which may mediate protein-protein interaction and ligand binding. The encoded protein contains twelve SRCR domains, a transmembrane region and a cytoplasmic domain. Alternative splicing results in multiple transcript variants encoding different isoforms. [provided by RefSeq, Jul 2014],similarity:Contains 12 SRCR domains.,tissue specificity:Isoform 1 is highly expressed in the spleen, lymph nodes, thymus, and fetal liver and weakly expressed in bone marrow and no expression was found in peripheral blood leukocytes. Isoform 1 expression is restricted to the monocyte and macrophage cell lines. Isoform 2 is only expressed in spleen.,

## Research Area

## Image Data



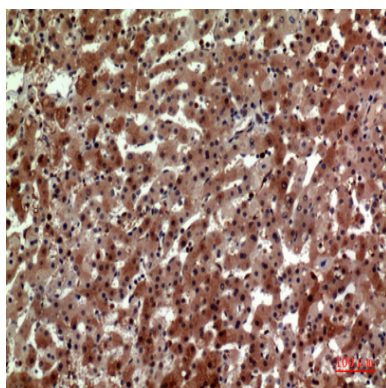
Western blot analysis of lysate from HeLa cells, using CD163L1 Antibody.



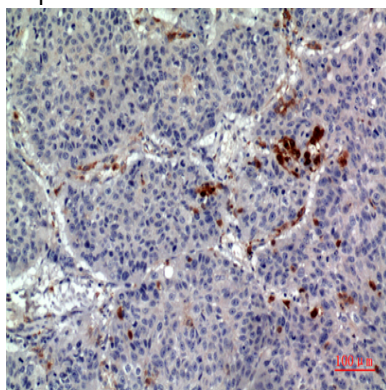
Western Blot analysis of HeLa cells using CD163b Polyclonal Antibody.. Secondary antibody was diluted at 1:20000

**Product Name: CD163b Rabbit Polyclonal Antibody**  
**Catalog #: APRab08241**

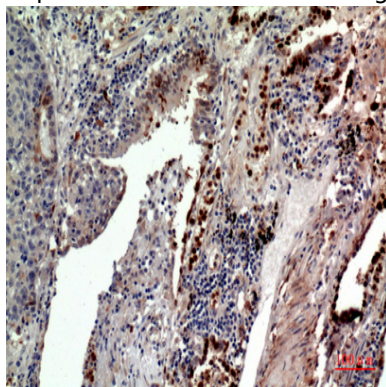
---



Immunohistochemical analysis of paraffin-embedded human-liver, antibody was diluted at 1:100



Immunohistochemical analysis of paraffin-embedded human-lung, antibody was diluted at 1:100



Immunohistochemical analysis of paraffin-embedded human-lung, antibody was diluted at 1:100

## **Note**

For research use only.