

Product Name: CCP3 Rabbit Polyclonal Antibody
Catalog #: APRab08156



Summary

Production Name	CCP3 Rabbit Polyclonal Antibody
Description	Rabbit Polyclonal Antibody
Host	Rabbit
Application	IHC-P,IF-P,IF-F,ICC/IF,ELISA
Reactivity	Human,Rat,Mouse

Performance

Conjugation	Unconjugated
Modification	Unmodified
Isotype	IgG
Clonality	Polyclonal
Form	Liquid
Storage	Store at 4°C short term. Aliquot and store at -20°C long term. Avoid freeze/thaw cycles.
Buffer	Liquid in PBS containing 50% glycerol, 0.5% BSA and 0.02% New type preservative N.
Purification	Affinity purification

Immunogen

Gene Name	AGBL3
Alternative Names	AGBL3; CCP3; Cytosolic carboxypeptidase 3; ATP/GTP-binding protein-like 3
Gene ID	340351.0
SwissProt ID	Q8NEM8. The antiserum was produced against synthesized peptide derived from human AGBL3. AA range:611-660

Application

Dilution Ratio	IHC-P 1:100-1:300, ELISA 1:20000, IF-P/IF-F/ICC/IF 1:50-200
Molecular Weight	

Background

cofactor: Binds 1 zinc ion per subunit.,function: May play a role in the processing of tubulin.,similarity: Belongs to the

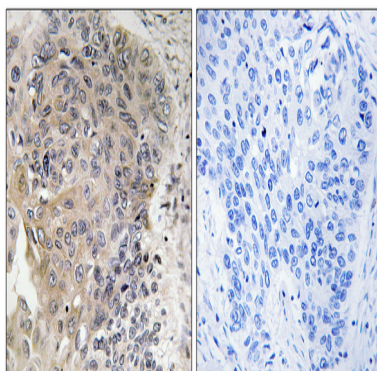
Product Name: CCP3 Rabbit Polyclonal Antibody
Catalog #: APRab08156



peptidase M14 family.,cofactor:Binds 1 zinc ion per subunit.,function:May play a role in the processing of tubulin.,similarity:Belongs to the peptidase M14 family.,

Research Area

Image Data



Immunohistochemistry analysis of paraffin-embedded human lung carcinoma, using CBCP3 Antibody. The picture on the right is blocked with the synthesized peptide.

Note

For research use only.