

Product Name: CBP80 Rabbit Polyclonal Antibody
Catalog #: APRab08043



Summary

Production Name	CBP80 Rabbit Polyclonal Antibody
Description	Rabbit Polyclonal Antibody
Host	Rabbit
Application	WB,IHC-P,IF-P,IF-F,ICC/IF,ELISA
Reactivity	Human,Mouse,Rat

Performance

Conjugation	Unconjugated
Modification	Unmodified
Isotype	IgG
Clonality	Polyclonal
Form	Liquid
Storage	Store at 4°C short term. Aliquot and store at -20°C long term. Avoid freeze/thaw cycles.
Buffer	Liquid in PBS containing 50% glycerol, 0.5% BSA and 0.02% New type preservative N.
Purification	Affinity purification

Immunogen

Gene Name	NCBP1
Alternative Names	NCBP1; CBP80; NCBP; Nuclear cap-binding protein subunit 1; 80 kDa nuclear cap-binding protein; CBP80; NCBP 80 kDa subunit
Gene ID	4686.0
SwissProt ID	Q09161.The antiserum was produced against synthesized peptide derived from human NCBP1. AA range:1-50

Application

Dilution Ratio	WB 1:500-1:2000, IHC-P 1:100-1:300, ELISA 1:20000, IF-P/IF-F/ICC/IF 1:50-200
Molecular Weight	80kDa

Product Name: CBP80 Rabbit Polyclonal Antibody
Catalog #: AP Rab08043



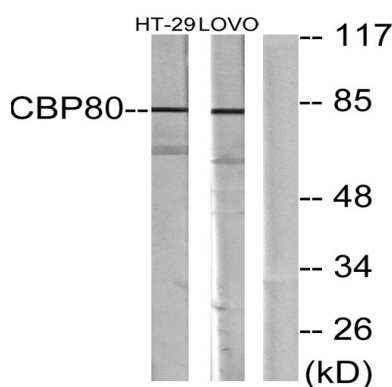
Background

The product of this gene is a component of the nuclear cap-binding protein complex (CBC), which binds to the monomethylated 5' cap of nascent pre-mRNA in the nucleoplasm. The encoded protein promotes high-affinity mRNA-cap binding and associates with the CTD of RNA polymerase II. The CBC promotes pre-mRNA splicing, 3'-end processing, RNA nuclear export, and nonsense-mediated mRNA decay. [provided by RefSeq, Jul 2008],function:Involved in mediating U snRNA export from the nucleus. Binds to 5' capped mRNA.,similarity:Belongs to the NCBP1 family.,similarity:Contains 1 MIF4G domain.,subunit:Found in a U snRNA export complex with RNUXA/PHAX, CBP20, CBP80, RAN, XPO1 and m7G-capped RNA. Interaction with RNUXA/PHAX (By similarity). Heterodimer with NCBP2. Is part of the exon junction complex (EJC) containing NCBP1, NCBP2, RNPS1, RBM8A, SRRM1, NXF1, UPF3B, UPF2, THOC4 and/or REFBP2.,

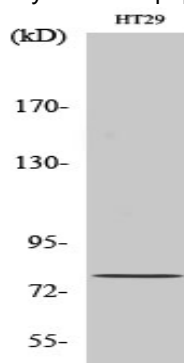
Research Area

Spliceosome;

Image Data



Western blot analysis of lysates from HT-29 and LOVO cells, using NCBP1 Antibody. The lane on the right is blocked with the synthesized peptide.



Western Blot analysis of various cells using CBP80 Polyclonal Antibody diluted at 1: 500

Product Name: CBP80 Rabbit Polyclonal Antibody
Catalog #: APRab08043



Note

For research use only.