

**Product Name: Casein Kinase I $\gamma$ 2 Rabbit Polyclonal Antibody**  
**Catalog #: APRab07945**

---

## Summary

<b>Production Name</b>	Casein Kinase I $\gamma$ 2 Rabbit Polyclonal Antibody
<b>Description</b>	Rabbit Polyclonal Antibody
<b>Host</b>	Rabbit
<b>Application</b>	WB,IHC-P,IF-P,IF-F,ICC/IF,ELISA
<b>Reactivity</b>	Human,Mouse,Rat

## Performance

<b>Conjugation</b>	Unconjugated
<b>Modification</b>	Unmodified
<b>Isotype</b>	IgG
<b>Clonality</b>	Polyclonal
<b>Form</b>	Liquid
<b>Storage</b>	Store at 4°C short term. Aliquot and store at -20°C long term. Avoid freeze/thaw cycles.
<b>Buffer</b>	Liquid in PBS containing 50% glycerol, 0.5% BSA and 0.02% New type preservative N.
<b>Purification</b>	Affinity purification

## Immunogen

<b>Gene Name</b>	CSNK1G2
<b>Alternative Names</b>	CSNK1G2; CK1G2; Casein kinase I isoform gamma-2; CKI-gamma 2
<b>Gene ID</b>	1455.0
<b>SwissProt ID</b>	P78368.The antiserum was produced against synthesized peptide derived from human CKI-gamma2. AA range:10-59

## Application

<b>Dilution Ratio</b>	WB 1:500-1:2000, IHC-P 1:100-1:300, IF-P/IF-F/ICC/IF 1:200-1:1000, ELISA 1:10000.Not yet tested in other applications.
<b>Molecular Weight</b>	47kDa

**Product Name: Casein Kinase I $\gamma$ 2 Rabbit Polyclonal Antibody**  
**Catalog #: APRab07945**



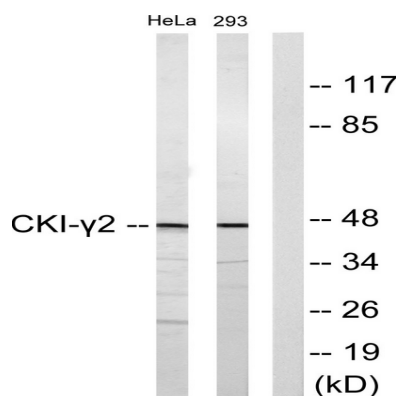
## Background

catalytic activity:ATP + a protein = ADP + a phosphoprotein.,function:Casein kinases are operationally defined by their preferential utilization of acidic proteins such as caseins as substrates. It can phosphorylate a large number of proteins. Participates in Wnt signaling.,PTM:Autophosphorylated.,similarity:Belongs to the protein kinase superfamily. CK1 Ser/Thr protein kinase family. Casein kinase I subfamily.,similarity:Contains 1 protein kinase domain.,subunit:Monomer.,tissue specificity:Testis.,catalytic activity:ATP + a protein = ADP + a phosphoprotein.,function:Casein kinases are operationally defined by their preferential utilization of acidic proteins such as caseins as substrates. It can phosphorylate a large number of proteins. Participates in Wnt signaling.,PTM:Autophosphorylated.,similarity:Belongs to the protein kinase superfamily. CK1 Ser/Thr protein kinase family. Casein kinase I subfamily.,similarity:Contains 1 protein kinase domain.,subunit:Monomer.,tissue specificity:Testis.,

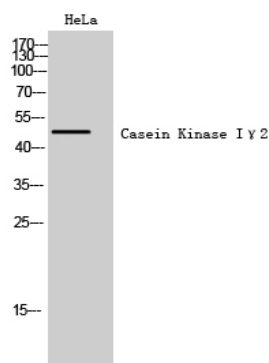
## Research Area

Hedgehog;

## Image Data



Western blot analysis of lysates from HeLa and 293 cells, using CKI-gamma2 Antibody. The lane on the right is blocked with the synthesized peptide.



**Product Name: Casein Kinase I $\gamma$ 2 Rabbit Polyclonal Antibody**  
**Catalog #: APRab07945**



---

Western Blot analysis of HeLa cells using Casein Kinase I $\gamma$ 2 Polyclonal Antibody

**Note**

For research use only.