

Product Name: Casein Kinase Iy1 Rabbit Polyclonal Antibody
Catalog #: APRab07943

Summary

Production Name	Casein Kinase Iy1 Rabbit Polyclonal Antibody
Description	Rabbit Polyclonal Antibody
Host	Rabbit
Application	WB,IHC-P,IF-P,IF-F,ICC/IF,ELISA
Reactivity	Human,Mouse,Rat,Monkey

Performance

Conjugation	Unconjugated
Modification	Unmodified
Isotype	IgG
Clonality	Polyclonal
Form	Liquid
Storage	Store at 4°C short term. Aliquot and store at -20°C long term. Avoid freeze/thaw cycles.
Buffer	Liquid in PBS containing 50% glycerol, 0.5% BSA and 0.02% New type preservative N.
Purification	Affinity purification

Immunogen

Gene Name	CSNK1G1
Alternative Names	CSNK1G1; Casein kinase I isoform gamma-1; CKI-gamma 1
Gene ID	53944.0
SwissProt ID	Q9HCP0.The antiserum was produced against synthesized peptide derived from human CKI-gamma1. AA range:1-50

Application

Dilution Ratio	WB 1:500-1:2000, IHC-P 1:100-1:300, IF-P/IF-F/ICC/IF 1:200-1:1000, ELISA 1:20000.Not yet tested in other applications.
Molecular Weight	49kDa

Product Name: Casein Kinase Iγ1 Rabbit Polyclonal Antibody
Catalog #: AP Rab07943



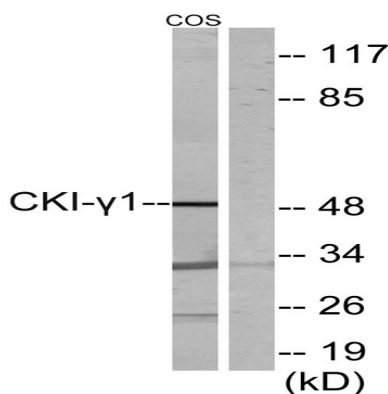
Background

This gene encodes a member of the casein kinase I gene family. This family is comprised of serine/threonine kinases that phosphorylate acidic proteins such as caseins. The encoded kinase plays a role in cell cycle checkpoint arrest in response to stalled replication forks by phosphorylating Claspin. A mutation in this gene may be associated with non-syndromic early-onset epilepsy (NSEOE). [provided by RefSeq, Jul 2016], catalytic activity: ATP + a protein = ADP + a phosphoprotein., function: Casein kinases are operationally defined by their preferential utilization of acidic proteins such as caseins as substrates. It can phosphorylate a large number of proteins. Participates in Wnt signaling., PTM: Autophosphorylated., similarity: Belongs to the protein kinase superfamily., similarity: Belongs to the protein kinase superfamily. CK1 Ser/Thr protein kinase family. Casein kinase I subfamily., similarity: Contains 1 protein kinase domain., subunit: Monomer.,

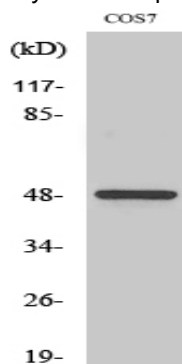
Research Area

Hedgehog;

Image Data



Western blot analysis of lysates from COS7 cells, using CKI-gamma1 Antibody. The lane on the right is blocked with the synthesized peptide.



Product Name: Casein Kinase Iy1 Rabbit Polyclonal Antibody
Catalog #: APRab07943



Western Blot analysis of various cells using Casein Kinase Iy1 Polyclonal Antibody

Note

For research use only.