

Product Name: Casein Kinase I α Rabbit Polyclonal Antibody
Catalog #: APRab07942

Summary

Production Name	Casein Kinase I α Rabbit Polyclonal Antibody
Description	Rabbit Polyclonal Antibody
Host	Rabbit
Application	WB,IHC-P,IF-P,IF-F,ICC/IF,ELISA
Reactivity	Human,Mouse,Rat

Performance

Conjugation	Unconjugated
Modification	Unmodified
Isotype	IgG
Clonality	Polyclonal
Form	Liquid
Storage	Store at 4°C short term. Aliquot and store at -20°C long term. Avoid freeze/thaw cycles.
Buffer	Liquid in PBS containing 50% glycerol, 0.5% BSA and 0.02% New type preservative N.
Purification	Affinity purification

Immunogen

Gene Name	CSNK1A1
Alternative Names	CSNK1A1; Casein kinase I isoform alpha; CKI-alpha; CK1
Gene ID	1452.0
SwissProt ID	P48729.The antiserum was produced against synthesized peptide derived from human CKI-alpha. AA range:126-175

Application

Dilution Ratio	WB 1:500-1:2000, IHC-P 1:100-1:300, IF-P/IF-F/ICC/IF 1:200-1:1000, ELISA 1:20000.Not yet tested in other applications.
Molecular Weight	35kDa

Product Name: Casein Kinase I α Rabbit Polyclonal Antibody
Catalog #: APRab07942



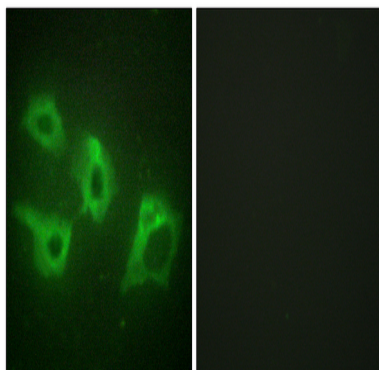
Background

catalytic activity:ATP + a protein = ADP + a phosphoprotein.,function:Casein kinases are operationally defined by their preferential utilization of acidic proteins such as caseins as substrates. It can phosphorylate a large number of proteins. Participates in Wnt signaling. Phosphorylates CTNNB1 on 'Ser-45',similarity:Belongs to the protein kinase superfamily.,similarity:Belongs to the protein kinase superfamily. CK1 Ser/Thr protein kinase family. Casein kinase I subfamily.,similarity:Contains 1 protein kinase domain.,subunit:Monomer. Interacts with the Axin complex.,catalytic activity:ATP + a protein = ADP + a phosphoprotein.,function:Casein kinases are operationally defined by their preferential utilization of acidic proteins such as caseins as substrates. It can phosphorylate a large number of proteins. Participates in Wnt signaling. Phosphorylates CTNNB1 on 'Ser-45',similarity:Belongs to the protein kinase superfamily.,similarity:Belongs to the protein kinase superfamily. CK1 Ser/Thr protein kinase family. Casein kinase I subfamily.,similarity:Contains 1 protein kinase domain.,subunit:Monomer. Interacts with the Axin complex.,

Research Area

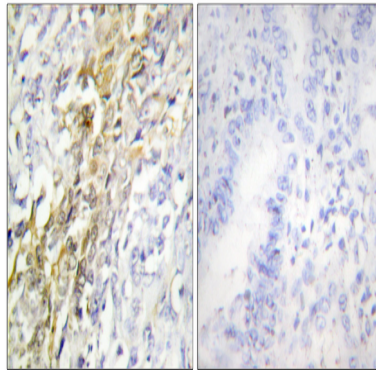
WNT;WNT-T CELLHedgehog;

Image Data

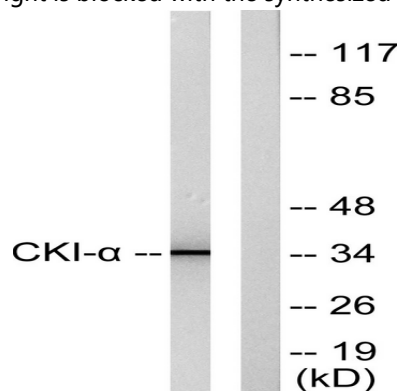


Immunofluorescence analysis of HeLa cells, using CKI- α Antibody. The picture on the right is blocked with the synthesized peptide.

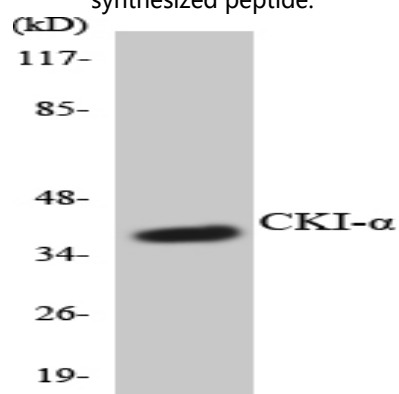
Product Name: Casein Kinase I α Rabbit Polyclonal Antibody
Catalog #: APRab07942



Immunohistochemistry analysis of paraffin-embedded human lung carcinoma tissue, using CKI- α Antibody. The picture on the right is blocked with the synthesized peptide.

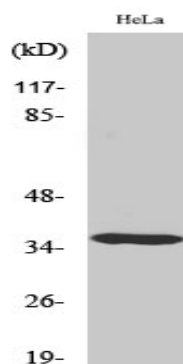


Western blot analysis of lysates from HeLa cells, using CKI- α Antibody. The lane on the right is blocked with the synthesized peptide.



Western blot analysis of the lysates from HT-29 cells using CKI- α antibody.

Product Name: Casein Kinase I α Rabbit Polyclonal Antibody
Catalog #: APRab07942



Western Blot analysis of various cells using Casein Kinase I α Polyclonal Antibody

Note

For research use only.