

Product Name: Cadherin-24 Rabbit Polyclonal Antibody
Catalog #: APRab07833



Summary

Production Name	Cadherin-24 Rabbit Polyclonal Antibody
Description	Rabbit Polyclonal Antibody
Host	Rabbit
Application	IF-P,IF-F,ICC/IF,WB,ELISA
Reactivity	Human,Mouse

Performance

Conjugation	Unconjugated
Modification	Unmodified
Isotype	IgG
Clonality	Polyclonal
Form	Liquid
Storage	Store at 4°C short term. Aliquot and store at -20°C long term. Avoid freeze/thaw cycles.
Buffer	Liquid in PBS containing 50% glycerol, 0.5% BSA and 0.02% New type preservative N.
Purification	Affinity purification

Immunogen

Gene Name	CDH24
Alternative Names	CDH24; CDH11L; Cadherin-24
Gene ID	64403.0
SwissProt ID	Q86UP0. The antiserum was produced against synthesized peptide derived from human CDH24. AA range:81-130

Application

Dilution Ratio	WB 1:500-2000, IF-P/IF-F/ICC/IF 1:200-1:1000, ELISA 1:10000. Not yet tested in other applications.
Molecular Weight	

Background

Product Name: Cadherin-24 Rabbit Polyclonal Antibody
Catalog #: AP Rab07833

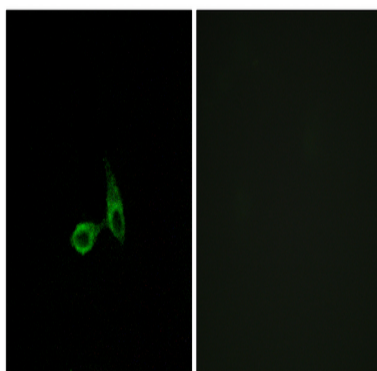


function: Cadherins are calcium dependent cell adhesion proteins. They preferentially interact with themselves in a homophilic manner in connecting cells; cadherins may thus contribute to the sorting of heterogeneous cell types. Cadherin-24 mediate strong cell-cell adhesion., similarity: Contains 5 cadherin domains., subunit: Associates with alpha-, beta- and delta-catenins., function: Cadherins are calcium dependent cell adhesion proteins. They preferentially interact with themselves in a homophilic manner in connecting cells; cadherins may thus contribute to the sorting of heterogeneous cell types. Cadherin-24 mediate strong cell-cell adhesion., similarity: Contains 5 cadherin domains., subunit: Associates with alpha-, beta- and delta-catenins.,

Research Area

Adherens_Junction

Image Data



Immunofluorescence analysis of HepG2 cells, using CDH24 Antibody. The picture on the right is blocked with the synthesized peptide.

Note

For research use only.