

**Product Name: Cadherin-22 Rabbit Polyclonal Antibody**  
**Catalog #: APRab07831**



## Summary

<b>Production Name</b>	Cadherin-22 Rabbit Polyclonal Antibody
<b>Description</b>	Rabbit Polyclonal Antibody
<b>Host</b>	Rabbit
<b>Application</b>	WB,IHC-P,IF-P,IF-F,ICC/IF,ELISA
<b>Reactivity</b>	Human,Mouse,Rat

## Performance

<b>Conjugation</b>	Unconjugated
<b>Modification</b>	Unmodified
<b>Isotype</b>	IgG
<b>Clonality</b>	Polyclonal
<b>Form</b>	Liquid
<b>Storage</b>	Store at 4°C short term. Aliquot and store at -20°C long term. Avoid freeze/thaw cycles.
<b>Buffer</b>	Liquid in PBS containing 50% glycerol, 0.5% BSA and 0.02% New type preservative N.
<b>Purification</b>	Affinity purification

## Immunogen

<b>Gene Name</b>	CDH22
<b>Alternative Names</b>	CDH22; C20orf25; Cadherin-22; Pituitary and brain cadherin; PB-cadherin
<b>Gene ID</b>	64405.0
<b>SwissProt ID</b>	Q9UJ99.The antiserum was produced against synthesized peptide derived from human CDH22. AA range:111-160

## Application

<b>Dilution Ratio</b>	WB 1:500-1:2000, IHC-P 1:100-1:300, IF-P/IF-F/ICC/IF 1:200-1:1000, ELISA 1:10000.Not yet tested in other applications.
<b>Molecular Weight</b>	84kDa

**Product Name: Cadherin-22 Rabbit Polyclonal Antibody**  
**Catalog #: APRab07831**



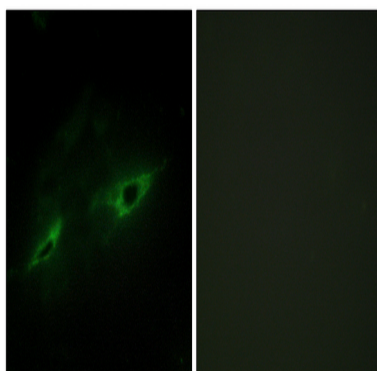
## Background

This gene is a member of the cadherin superfamily. The gene product is composed of five cadherin repeat domains and a cytoplasmic tail similar to the highly conserved cytoplasmic region of classical cadherins. Expressed predominantly in the brain, this putative calcium-dependent cell adhesion protein may play an important role in morphogenesis and tissue formation in neural and non-neural cells during development and maintenance of the brain and neuroendocrine organs. [provided by RefSeq, Jul 2008],function:Cadherins are calcium dependent cell adhesion proteins. They preferentially interact with themselves in a homophilic manner in connecting cells; cadherins may thus contribute to the sorting of heterogeneous cell types. PB-cadherins may have a role in the morphological organization of pituitary gland and brain tissues.,similarity:Contains 5 cadherin domains.,

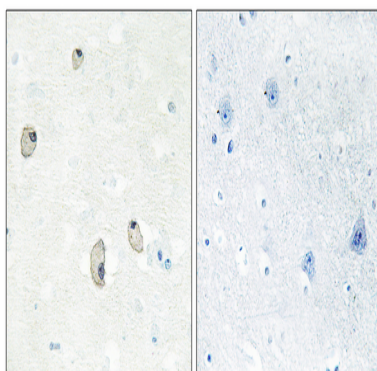
## Research Area

Adherens\_Junction

## Image Data

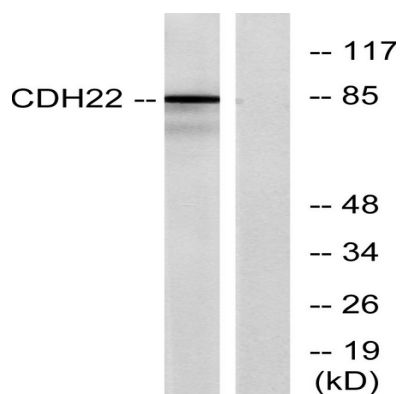


Immunofluorescence analysis of NIH/3T3 cells, using CDH22 Antibody. The picture on the right is blocked with the synthesized peptide.



Immunohistochemistry analysis of paraffin-embedded human brain tissue, using CDH22 Antibody. The picture on the right is blocked with the synthesized peptide.

**Product Name: Cadherin-22 Rabbit Polyclonal Antibody**  
**Catalog #: APRab07831**



Western blot analysis of lysates from rat brain cells, using CDH22 Antibody. The lane on the right is blocked with the synthesized peptide.

### **Note**

For research use only.