

Product Name: C7 Rabbit Polyclonal Antibody
Catalog #: APRab07756



Summary

Production Name	C7 Rabbit Polyclonal Antibody
Description	Rabbit Polyclonal Antibody
Host	Rabbit
Application	WB,IHC-P,IF-P,IF-F,ICC/IF,ELISA
Reactivity	Human,Rat,Mouse

Performance

Conjugation	Unconjugated
Modification	Unmodified
Isotype	IgG
Clonality	Polyclonal
Form	Liquid
Storage	Store at 4°C short term. Aliquot and store at -20°C long term. Avoid freeze/thaw cycles.
Buffer	Liquid in PBS containing 50% glycerol, 0.5% BSA and 0.02% New type preservative N.
Purification	Affinity purification

Immunogen

Gene Name	C7
Alternative Names	C7; Complement component C7
Gene ID	730.0
SwissProt ID	P10643.The antiserum was produced against synthesized peptide derived from the N-terminal region of human C7. AA range:100-150

Application

Dilution Ratio	WB 1:500-1:2000, IHC-P 1:100-1:300, ELISA 1:10000, IF-P/IF-F/ICC/IF 1:50-200
Molecular Weight	93kDa

Background

Product Name: C7 Rabbit Polyclonal Antibody
Catalog #: AP Rab07756

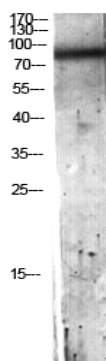


C7 is a component of the complement system. It participates in the formation of Membrane Attack Complex (MAC). People with C7 deficiency are prone to bacterial infection. [provided by RefSeq, Jul 2008],disease:Defects in C7 are a cause of component C7 deficiency (C7D) [MIM:217070]. Patients with C7D suffer from recurrent bacterial infections, predominantly from *Neisseria meningitidis*.,function:C7 is a constituent of the membrane attack complex. C7 binds to C5b forming the C5b-7 complex, where it serves as a membrane anchor.,online information:C7 mutation db,PTM:C7 has 28 disulfide bridges.,similarity:Belongs to the complement C6/C7/C8/C9 family.,similarity:Contains 1 EGF-like domain.,similarity:Contains 1 LDL-receptor class A domain.,similarity:Contains 1 MACPF domain.,similarity:Contains 2 Sushi (CCP/SCR) domains.,similarity:Contains 2 TSP type-1 domains.,subunit:Monomer or dimer; as a C5b-7 complex it can also form multimeric rosettes.,

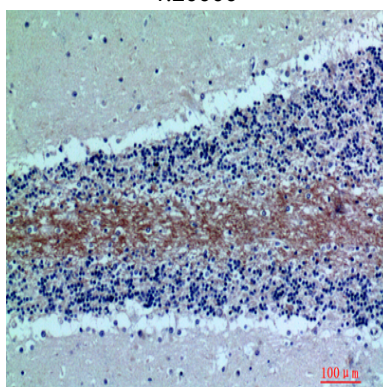
Research Area

Complement and coagulation cascades;Prion diseases;Systemic lupus erythematosus;

Image Data

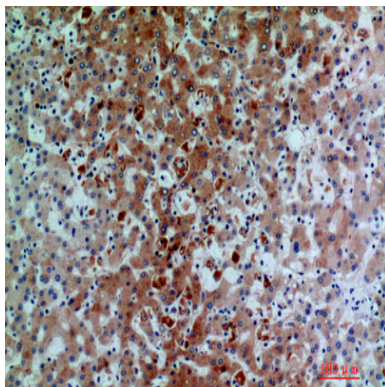


Western blot analysis of Hela lysis using C7 antibody. Antibody was diluted at 1:500. Secondary antibody was diluted at 1:20000



Immunohistochemical analysis of paraffin-embedded human-brain, antibody was diluted at 1:200

Product Name: C7 Rabbit Polyclonal Antibody
Catalog #: APRab07756



Immunohistochemical analysis of paraffin-embedded human-liver, antibody was diluted at 1:200

Note

For research use only.