

## Summary

<b>Production Name</b>	C6 Rabbit Polyclonal Antibody
<b>Description</b>	Rabbit Polyclonal Antibody
<b>Host</b>	Rabbit
<b>Application</b>	WB,IHC-P,IF-P,IF-F,ICC/IF,ELISA
<b>Reactivity</b>	Human,Rat

## Performance

<b>Conjugation</b>	Unconjugated
<b>Modification</b>	Unmodified
<b>Isotype</b>	IgG
<b>Clonality</b>	Polyclonal
<b>Form</b>	Liquid
<b>Storage</b>	Store at 4°C short term. Aliquot and store at -20°C long term. Avoid freeze/thaw cycles.
<b>Buffer</b>	Liquid in PBS containing 50% glycerol, 0.5% BSA and 0.02% New type preservative N.
<b>Purification</b>	Affinity purification

## Immunogen

<b>Gene Name</b>	C6
<b>Alternative Names</b>	C6; Complement component C6
<b>Gene ID</b>	729.0
<b>SwissProt ID</b>	P13671.The antiserum was produced against synthesized peptide derived from human C6. AA range:221-270

## Application

<b>Dilution Ratio</b>	WB 1:500-1:2000, IHC-P 1:100-1:300, ELISA 1:40000, IF-P/IF-F/ICC/IF 1:50-200
<b>Molecular Weight</b>	85-105kDa

## Background

**Product Name: C6 Rabbit Polyclonal Antibody**  
**Catalog #: APRab07755**

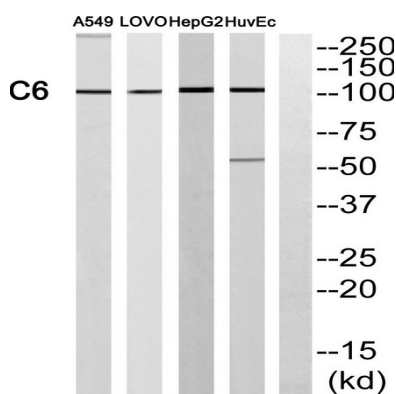


This gene encodes a component of the complement cascade. The encoded protein is part of the membrane attack complex that can be incorporated into the cell membrane and cause cell lysis. Mutations in this gene are associated with complement component-6 deficiency. Transcript variants encoding the same protein have been described.[provided by RefSeq, Nov 2012],disease:Defects in C6 are the cause of complement component 6 deficiency (C6D) [MIM:612446],function:Involved in the formation of the lytic c5b-9m complex.,online information:C6 mutation db,polymorphism:The sequence shown is that of allotype C6 B.,PTM:All cysteine residues are assumed to be cross-linked to one another. Individual modules containing an even number of conserved cysteine residues are supposed to have disulfide linkages only within the same module.,similarity:Belongs to the complement C6/C7/C8/C9 family.,similarity:Contains 1 EGF-like domain.,similarity:Contains 1 LDL-receptor class A domain.,similarity:Contains 1 MACPF domain.,similarity:Contains 2 Sushi (CCP/SCR) domains.,similarity:Contains 3 TSP type-1 domains.,

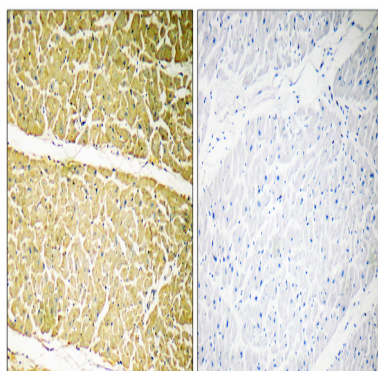
## Research Area

Complement and coagulation cascades;Prion diseases;Systemic lupus erythematosus;

## Image Data

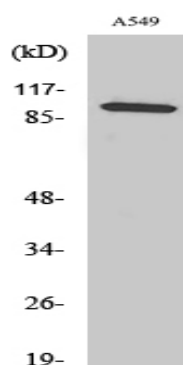


Western blot analysis of C6 Antibody. The lane on the right is blocked with the C6 peptide.



Immunohistochemistry analysis of paraffin-embedded human heart, using C6 Antibody. The lane on the right is blocked with the C6 peptide.

**Product Name: C6 Rabbit Polyclonal Antibody**  
**Catalog #: APRab07755**



Western Blot analysis of various cells using C6 Polyclonal Antibody diluted at 1 : 1000

### **Note**

For research use only.