

Product Name: C27C1 Rabbit Polyclonal Antibody
Catalog #: APRab07738



Summary

Production Name	C27C1 Rabbit Polyclonal Antibody
Description	Rabbit Polyclonal Antibody
Host	Rabbit
Application	WB,ELISA
Reactivity	Human,Rat,Mouse

Performance

Conjugation	Unconjugated
Modification	Unmodified
Isotype	IgG
Clonality	Polyclonal
Form	Liquid
Storage	Store at 4°C short term. Aliquot and store at -20°C long term. Avoid freeze/thaw cycles.
Buffer	Liquid in PBS containing 50% glycerol, and 0.02% New type preservative N.
Purification	Affinity purification

Immunogen

Gene Name	CYP27C1
Alternative Names	
Gene ID	339761.0
SwissProt ID	Q4G0S4. Synthesized peptide derived from human protein . at AA range: 80-160

Application

Dilution Ratio	WB 1:500-2000, ELISA 1:5000-20000
Molecular Weight	40kDa

Background

cytochrome P450 family 27 subfamily C member 1(CYP27C1) Homo sapiens This gene encodes a member of the cytochrome P450 superfamily of enzymes. The cytochrome P450 proteins are monooxygenases which catalyze many

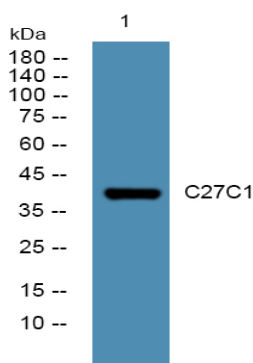
Product Name: C27C1 Rabbit Polyclonal Antibody
Catalog #: APRab07738



reactions involved in drug metabolism and synthesis of cholesterol, steroids and other lipids. [provided by RefSeq, Jul 2008],cofactor:Heme group,,similarity:Belongs to the cytochrome P450 family.,

Research Area

Image Data



Western blot analysis of lysates from K562 cells, primary antibody was diluted at 1:1000, 4° over night

Note

For research use only.